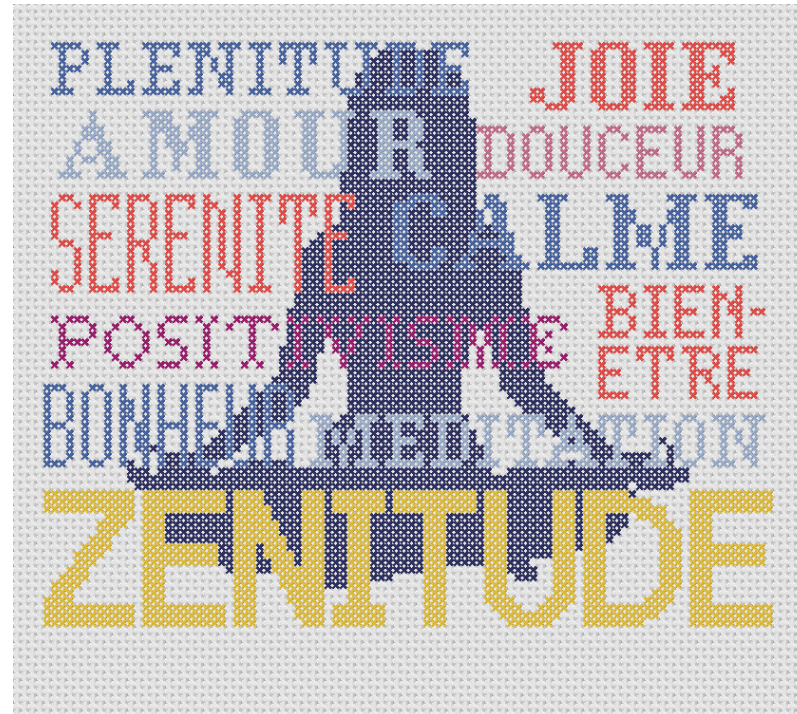
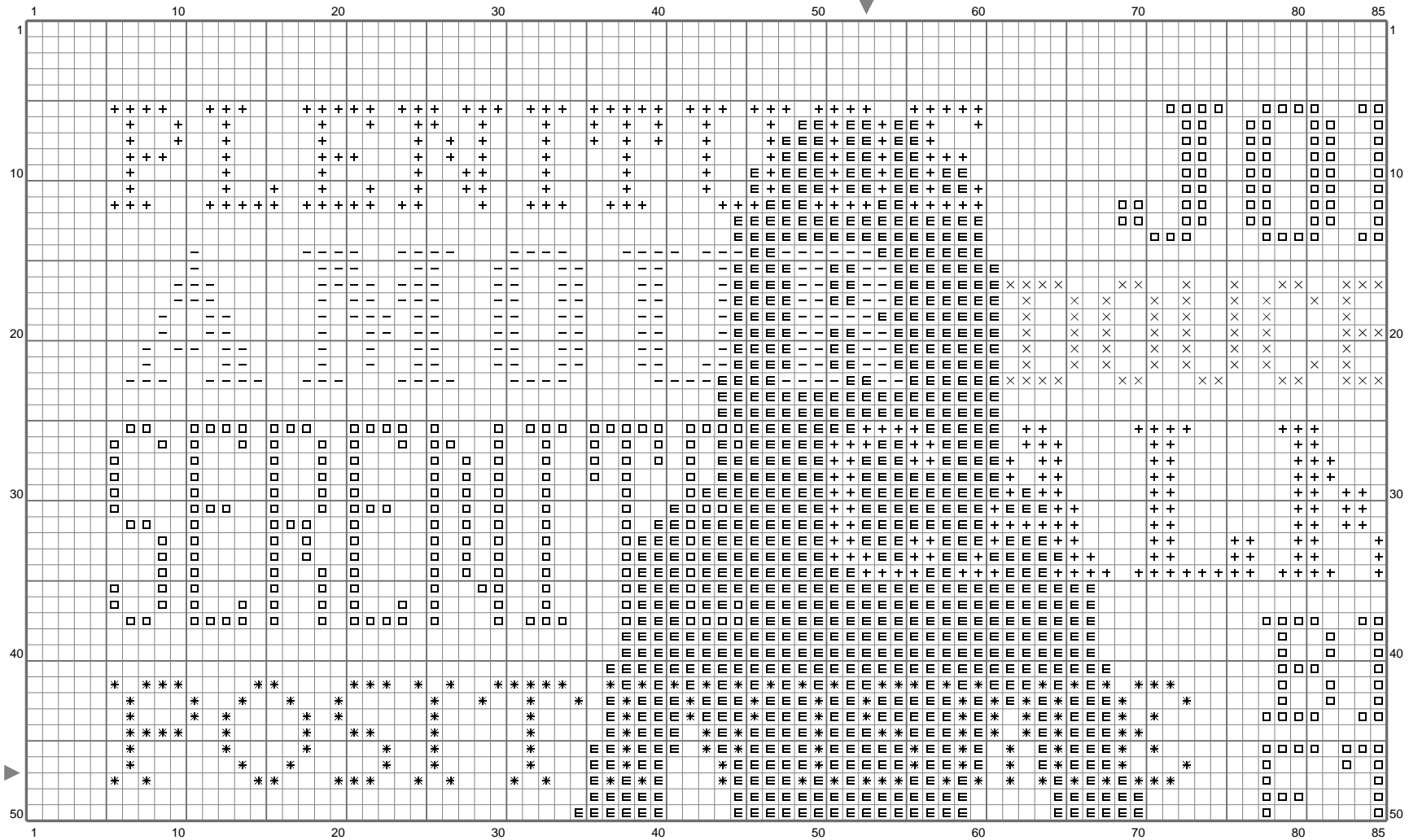


zenitude (2)

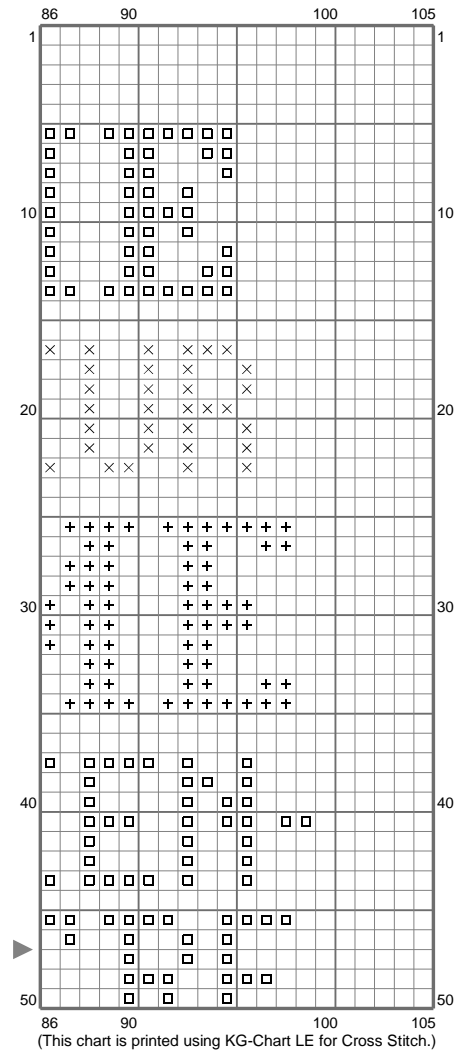


zenitude (2)



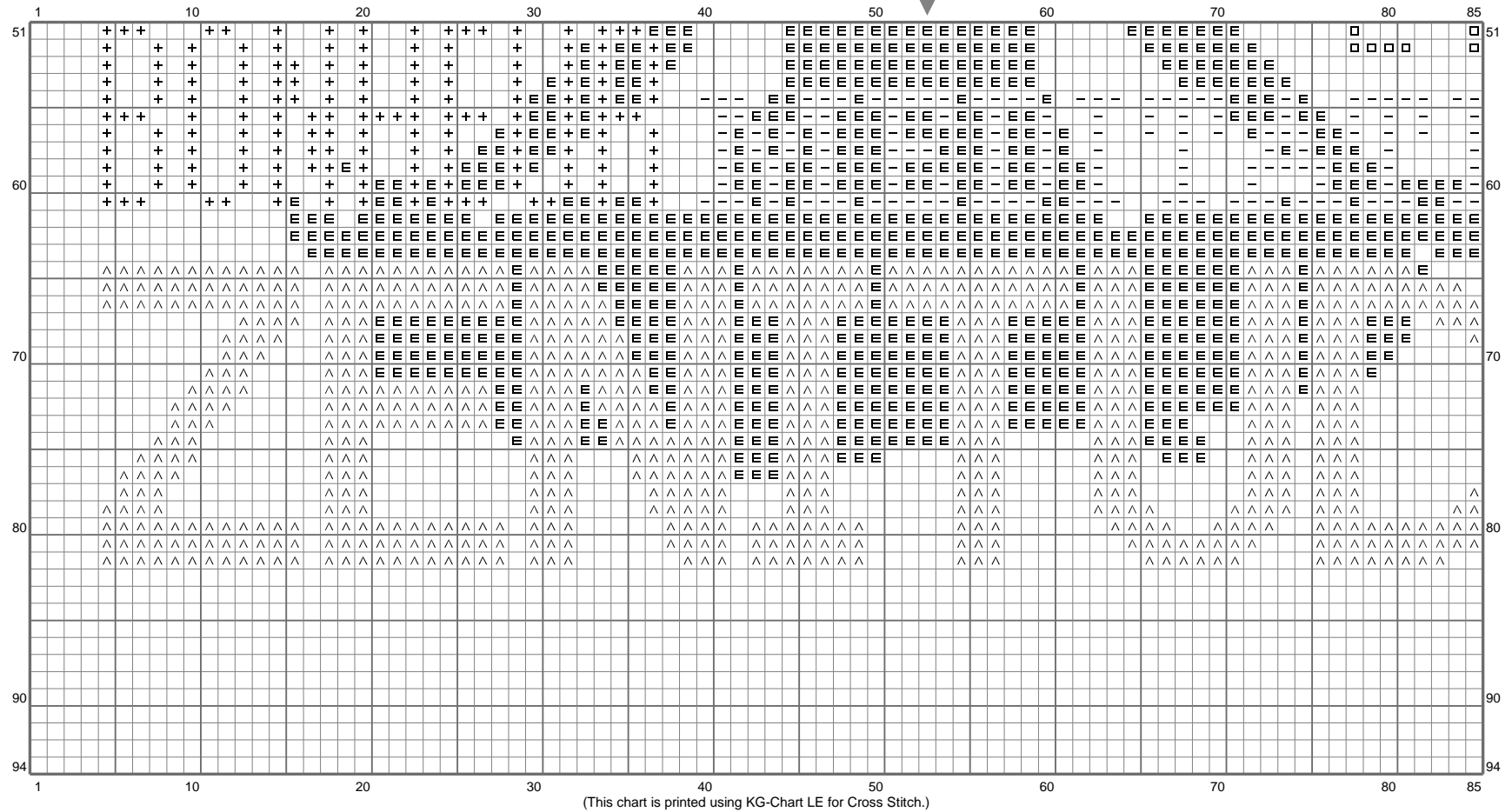
(This chart is printed using KG-Chart LE for Cross Stitch.)

zenitude (2)

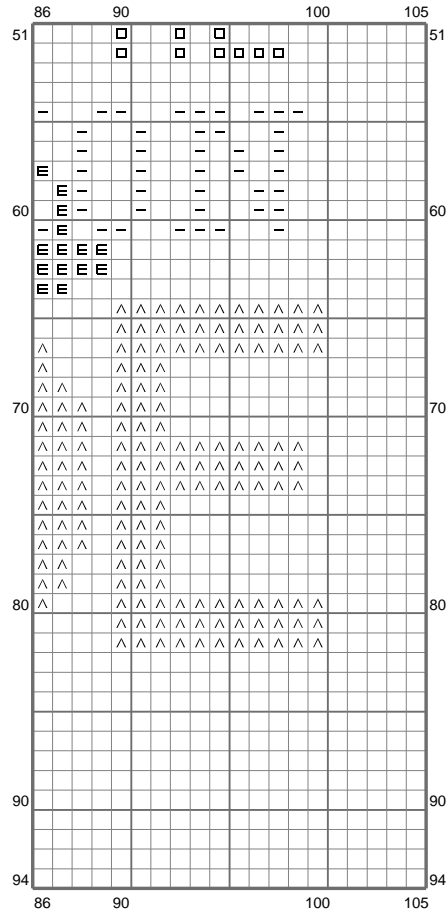


(This chart is printed using KG-Chart LE for Cross Stitch.)

zenitude (2)



zenitude (2)



(This chart is printed using KG-Chart LE for Cross Stitch.)

Stitch Count: 105w x 94h
 Finished Size: 19.05 cm x 17.05 cm (14 ct./inch)
 Cloth: le point de croix de martine
 Cloth's Color: White
 # of colors: 7 Colors

Color Table (DMC)

Cross Stitch

+	825	(523 ct)
□	350	(436 ct)
-	3325	(374 ct)
×	961	(102 ct)
*	917	(154 ct)
E	311	(1518 ct)
^	444	(910 ct)