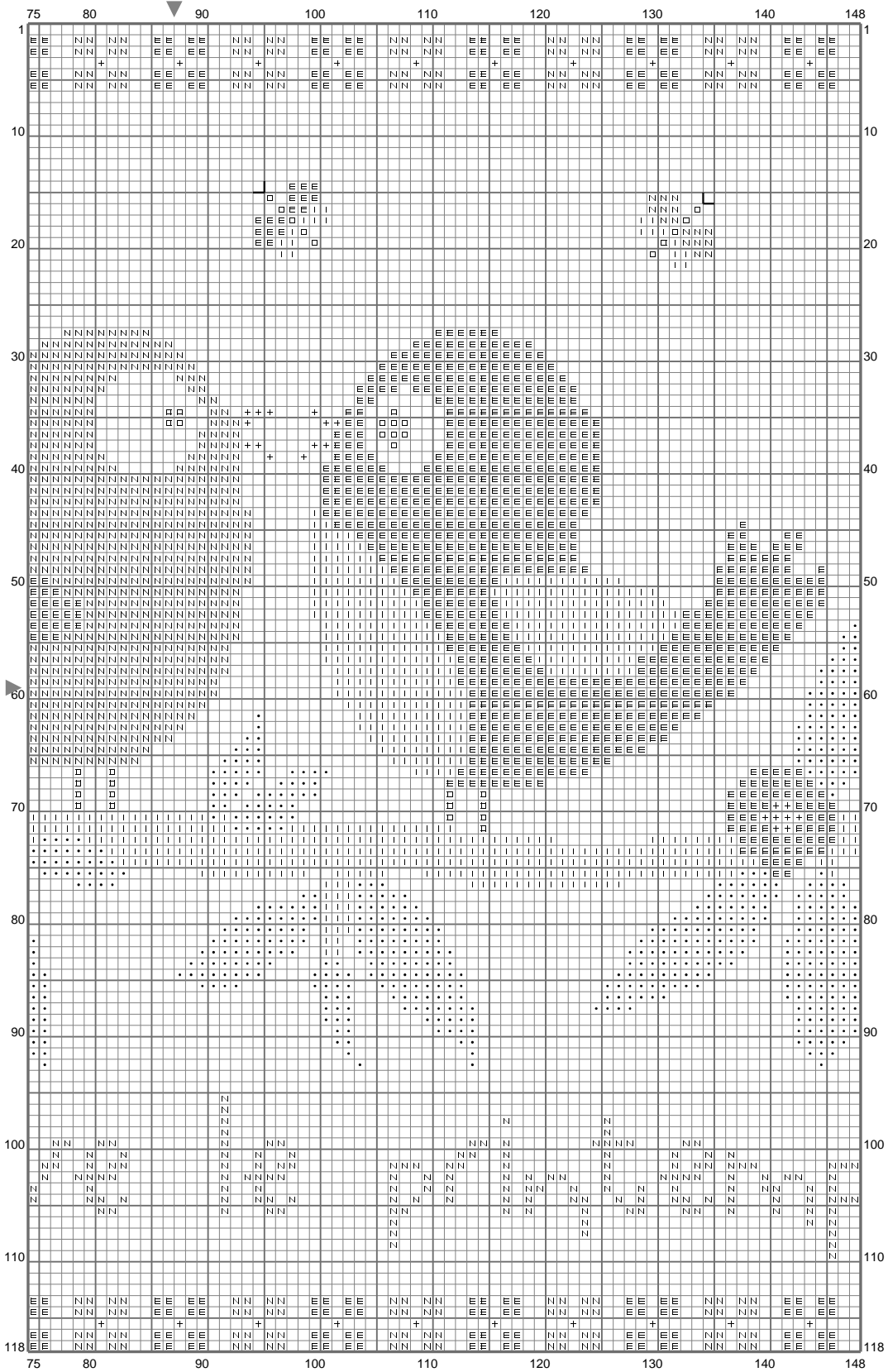
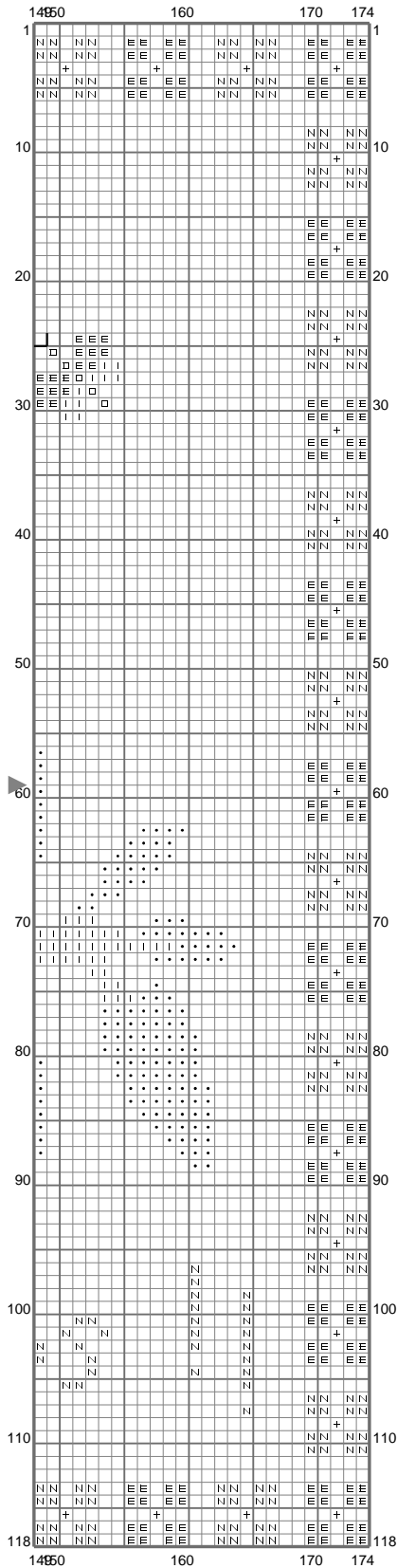


(This chart is printed using KG-Chart LE for Cross Stitch.)









(This chart is printed using KG-Chart LE for Cross Stitch.)




Stitch Count: 174w x 118h  
 Finished Size: 31.56 cm x 21.40 cm (28 ct./inch)  
 Cloth: Linen  
 Cloth's Color: White  
 # of colors: 6 Colors

Color Table (DMC)

**Cross Stitch**

-  307 (153 ct)
-  310 (42 ct)
-  704 (1672 ct)
-  783 (1717 ct)
-  996 (1778 ct)
-  3803 (2023 ct)

**Backstitch**

-  310 (6 ct)

(This chart is printed using KG-Chart LE for Cross Stitch.)