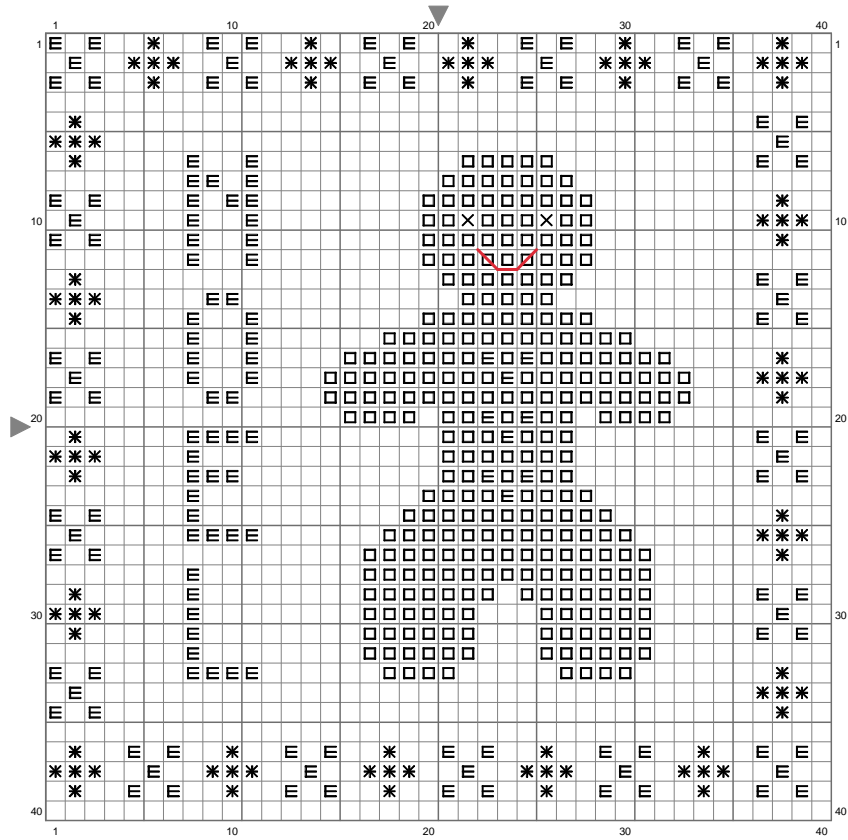


Untitled



(This chart is printed using KG-Chart LE for Cross Stitch.)

Stitch Count: 40w x 40h

Finished Size: 5.21 cm x 5.21 cm (39 ct./inch)






Cloth: Linen

Cloth's Color: White


of colors: 5 Colors

Color Table (DMC)

Cross Stitch

-  783 (283 ct)
-  783 (283 ct)
-  666 (148 ct)
-  310 (2 ct)
-  3364 (90 ct)

Backstitch

-  666 (3 ct)