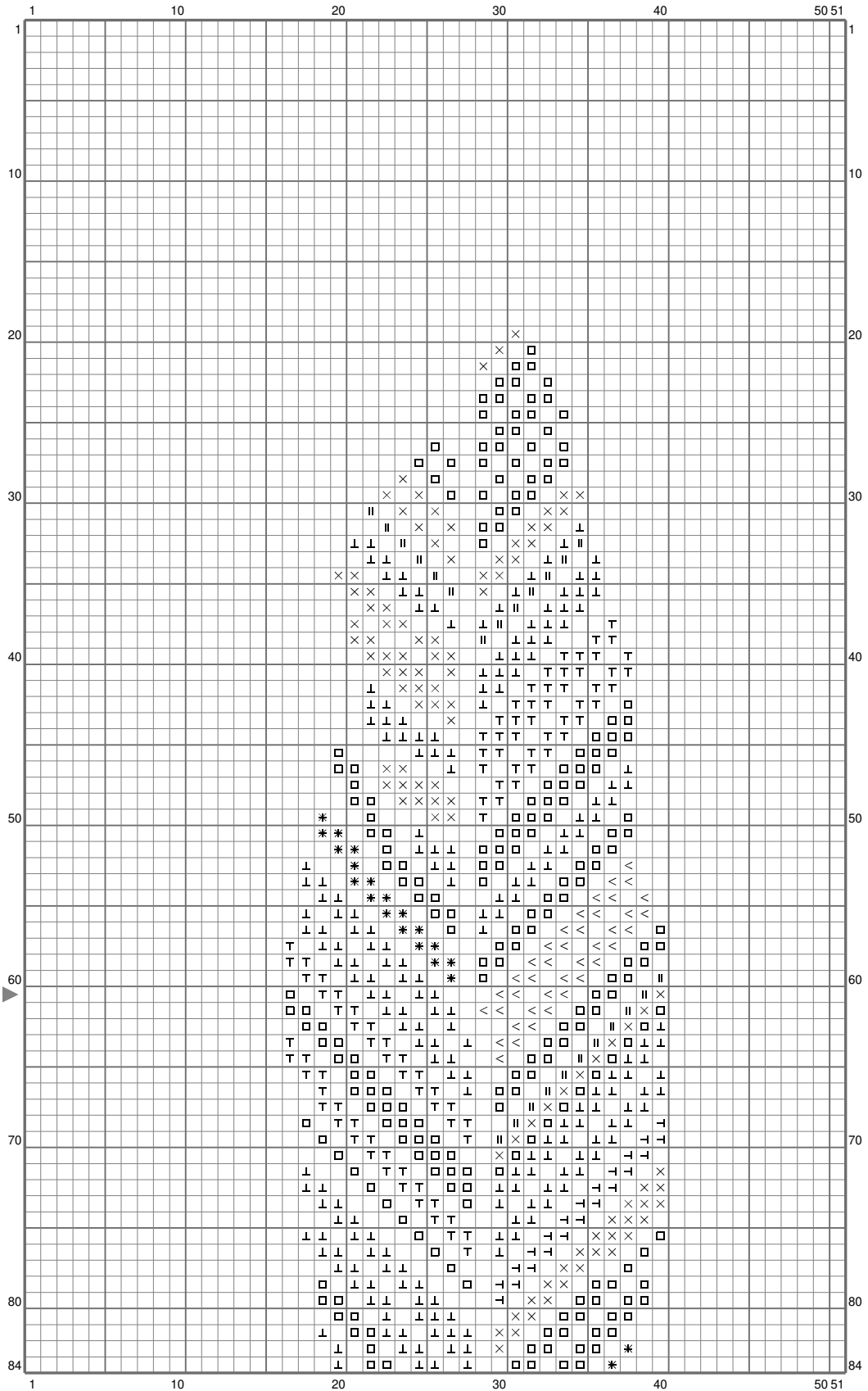
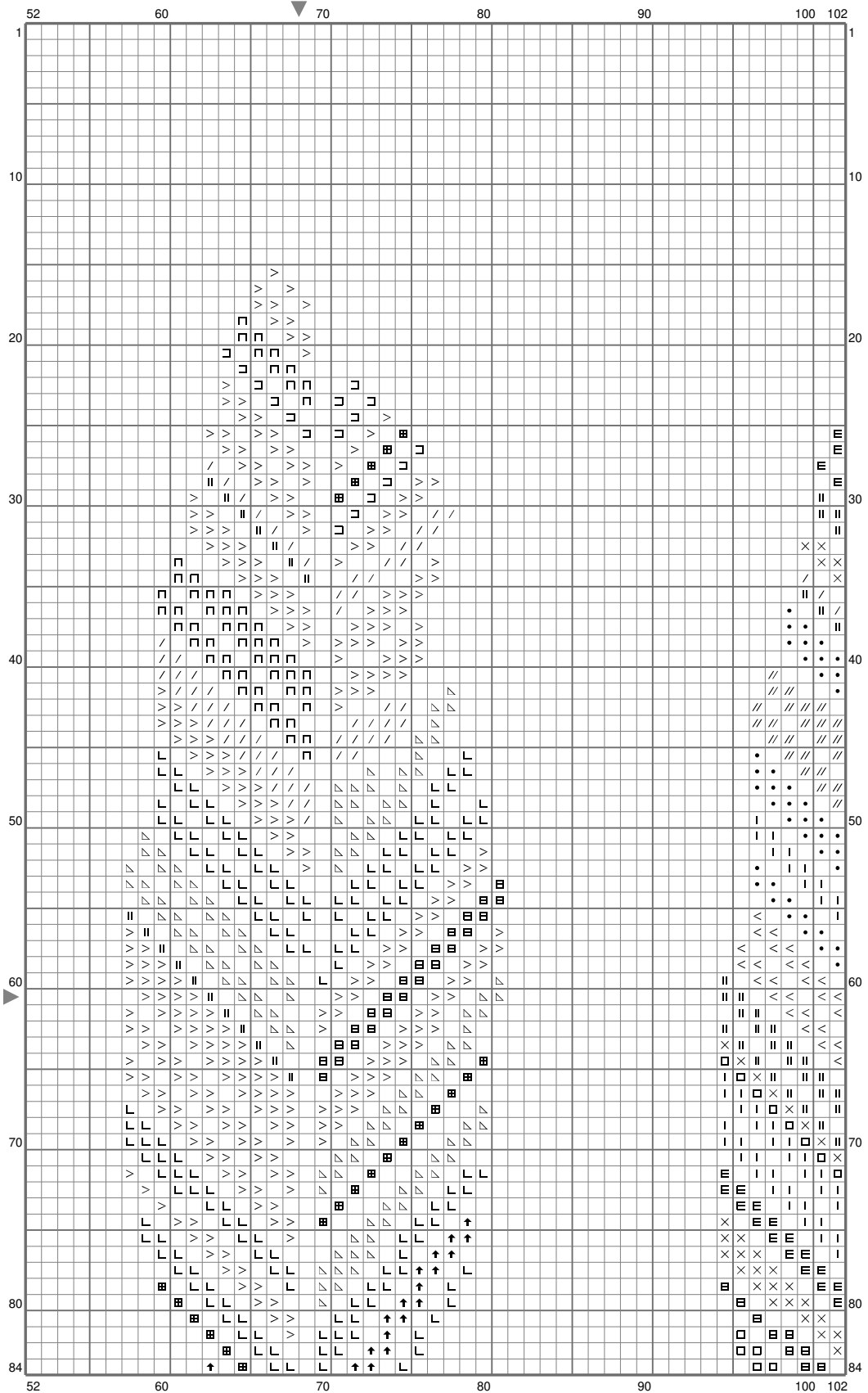


Plumes



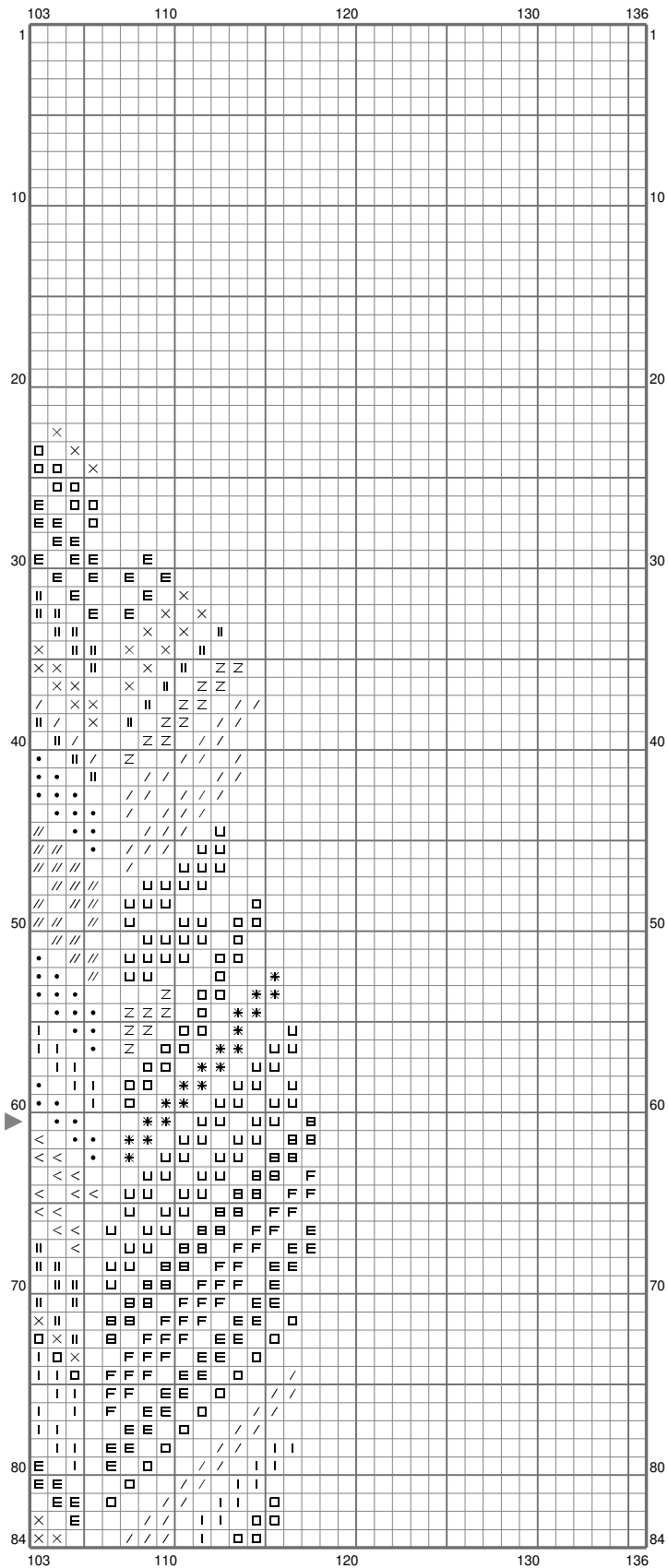
(This chart is printed using KG-Chart LE for Cross Stitch.)

Plumes



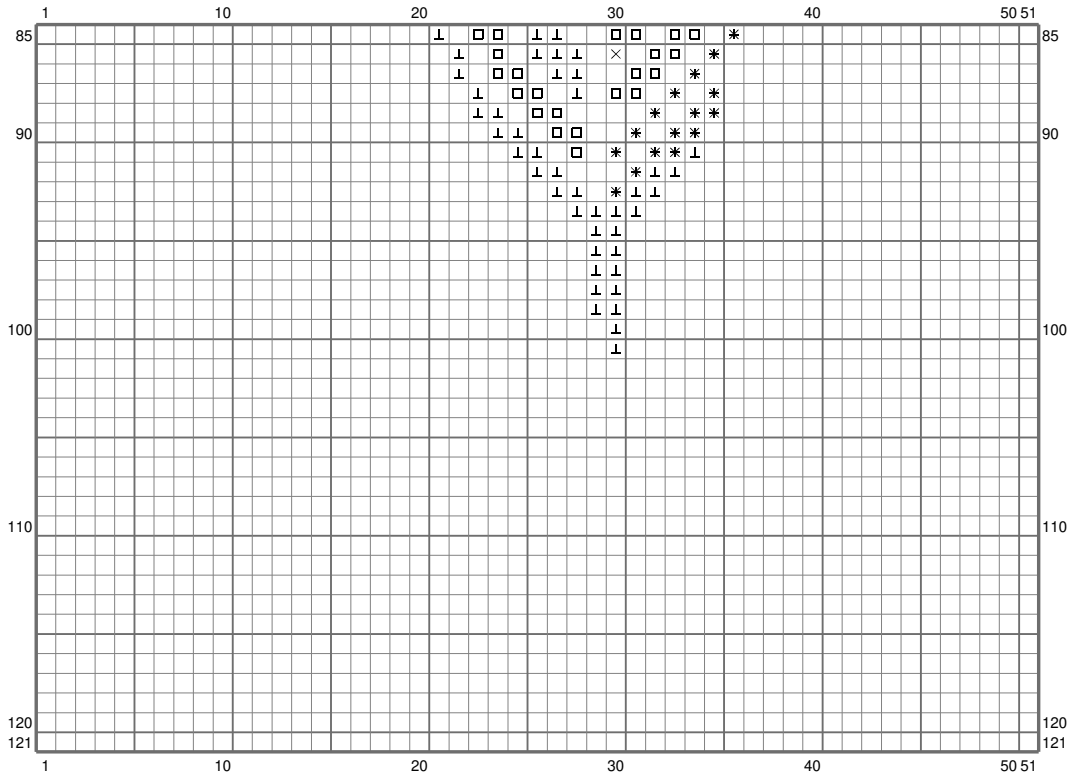
(This chart is printed using KG-Chart LE for Cross Stitch.)

Plumes

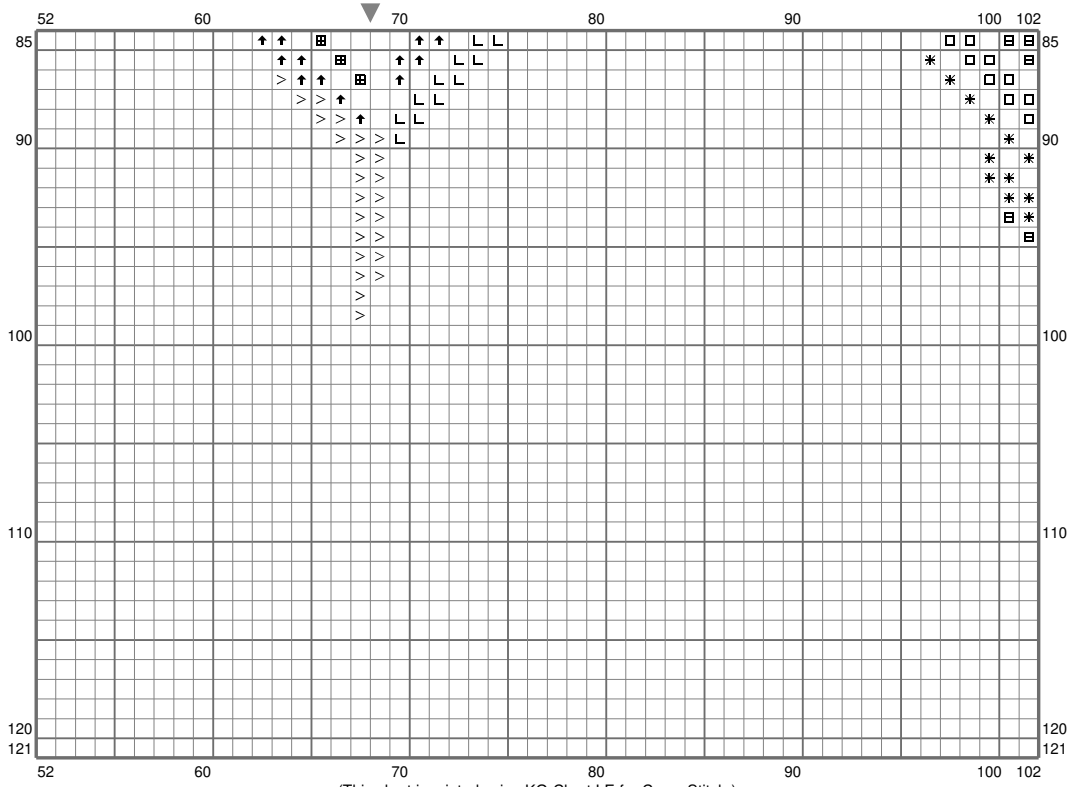


(This chart is printed using KG-Chart LE for Cross Stitch.)

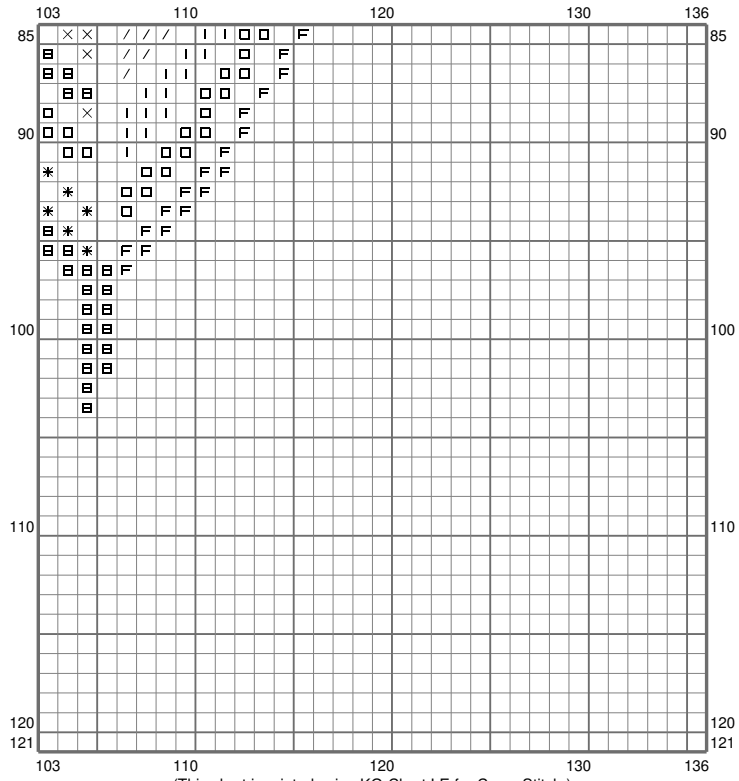
Plumes



Plumes



Plumes






















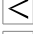




Plumes

Stitch Count: 136w x 121h
Finished Size: 12.33 cm x 10.97 cm (28 ct./inch)
Cloth: Le point de croix de martine
Cloth's Color: Unbleached
of colors: 24 Colors

Color Table (DMC)

Cross Stitch

	210	(22 ct)
	351	(85 ct)
	352	(17 ct)
	453	(44 ct)
	524	(68 ct)
	601	(54 ct)
	725	(89 ct)
	726	(69 ct)
	762	(74 ct)
	798	(93 ct)
	809	(259 ct)
	3328	(25 ct)
	3341	(124 ct)
	3705	(119 ct)
	3706	(167 ct)
	3752	(334 ct)
	3753	(167 ct)
	3801	(318 ct)
	3804	(31 ct)
	3823	(74 ct)
	3827	(50 ct)
	3844	(78 ct)
	3849	(18 ct)
	3866	(100 ct)