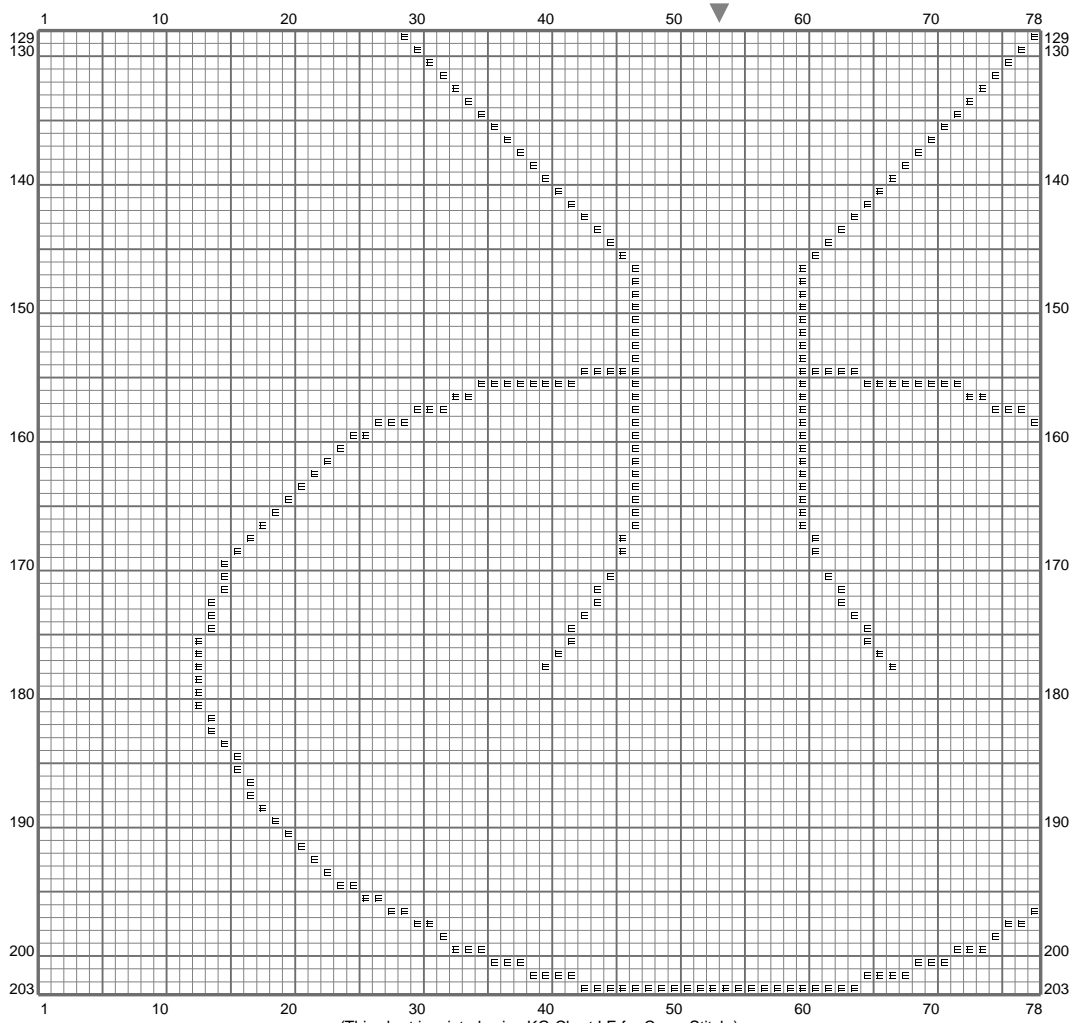
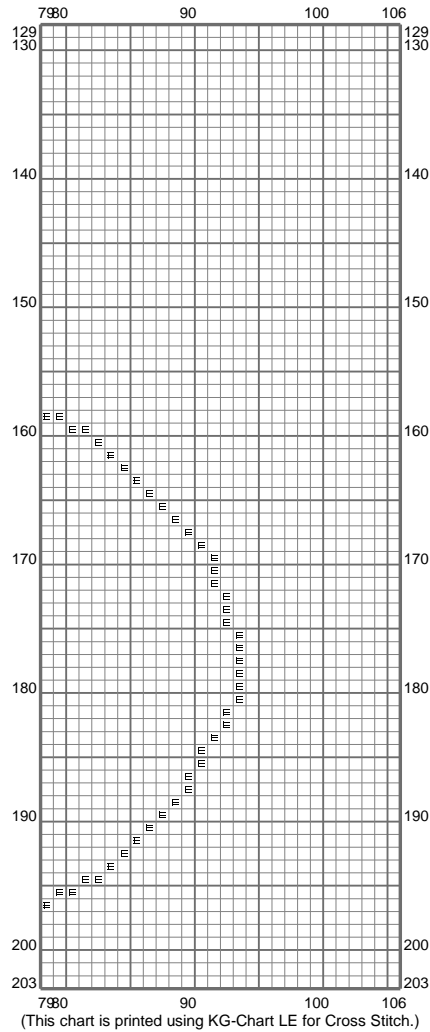


(This chart is printed using KG-Chart LE for Cross Stitch.)









Stitch Count: 106w x 203h  
 Finished Size: 11.70 cm x 22.41 cm (46 ct./inch)  
 Cloth: Aida  
 Cloth's Color: White  
 # of colors: 4 Colors

Color Table (DMC)

**Cross Stitch**

-  798 (1793 ct)
-  3022 (701 ct)
-  666 (211 ct)
-  798 (1793 ct)