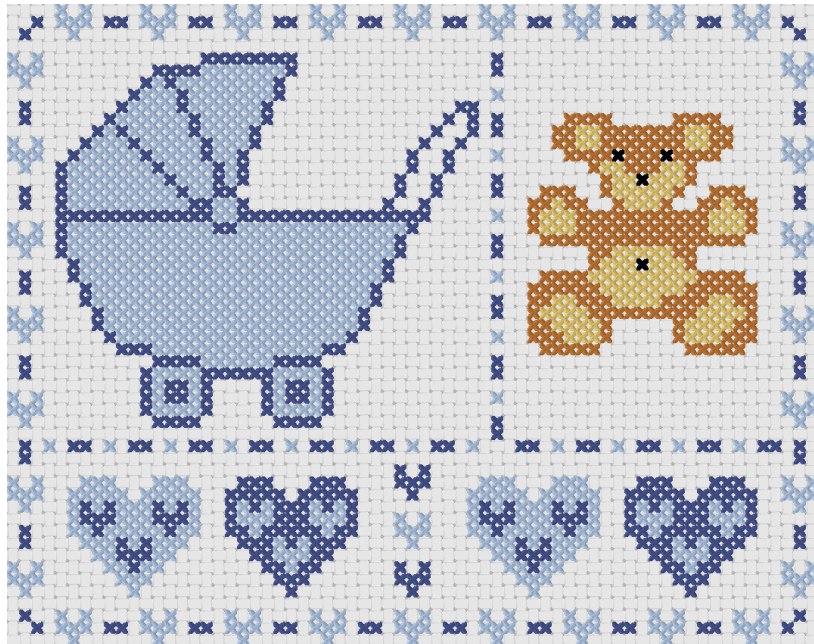
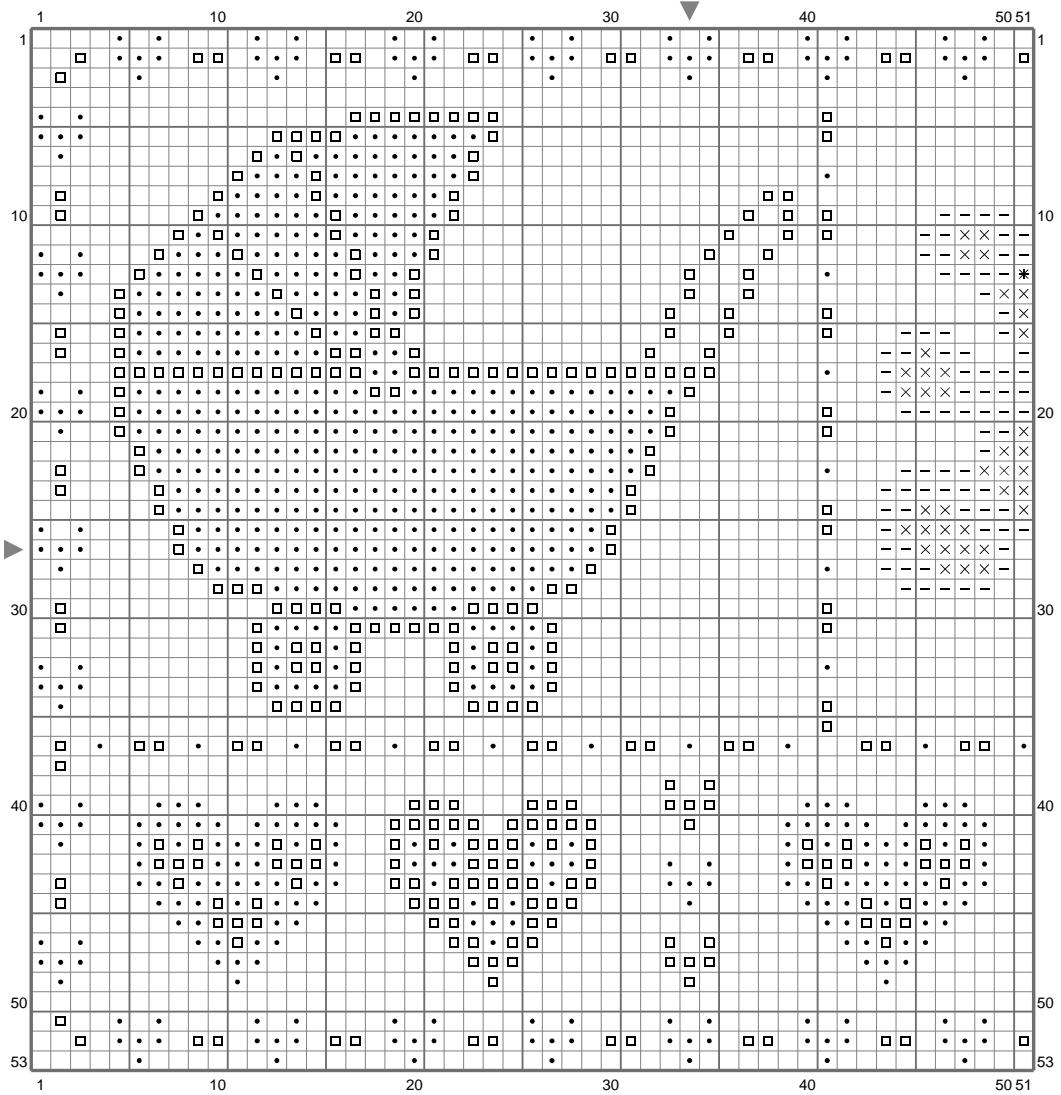


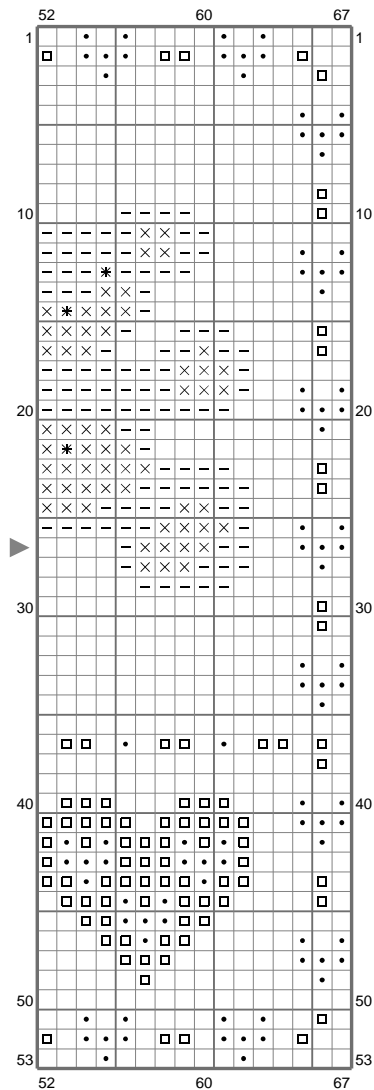
naissance



# naissance



# naissance



(This chart is printed using KG-Chart LE for Cross Stitch.)

Stitch Count: 67w x 53h

Finished Size: 5.67 cm x 4.48 cm (60 ct./inch)

Cloth: Le point de croix de Martine ([www.petitescroix.fr](http://www.petitescroix.fr))

Cloth's Color: White

# of colors: 6 Colors

## Color Table (DMC)

### Cross Stitch

✱	310	(4 ct)
□	312	(433 ct)
□	312	(433 ct)
—	782	(181 ct)
•	800	(773 ct)
×	3822	(96 ct)