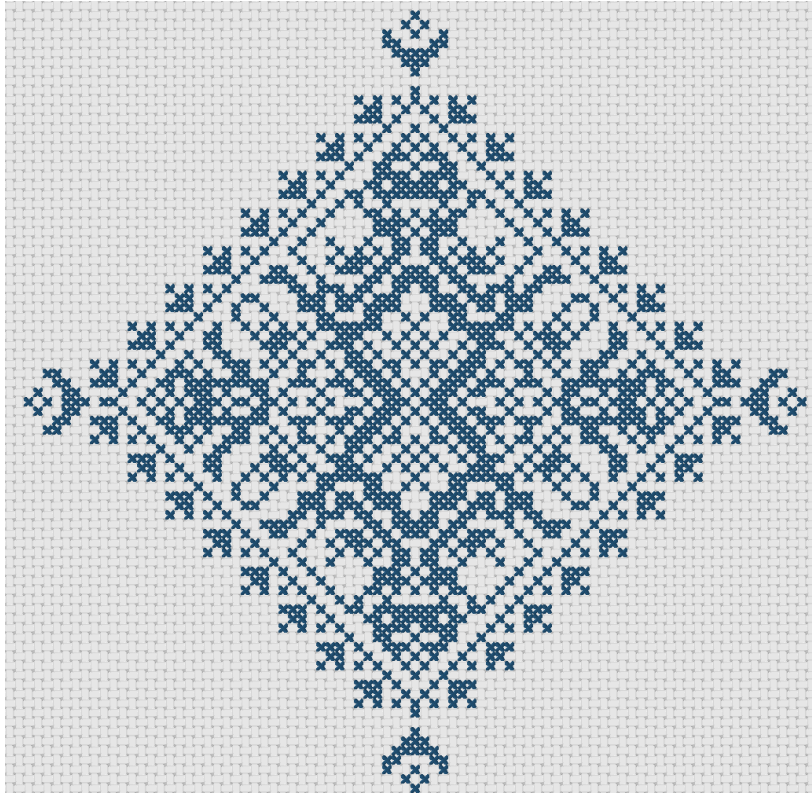
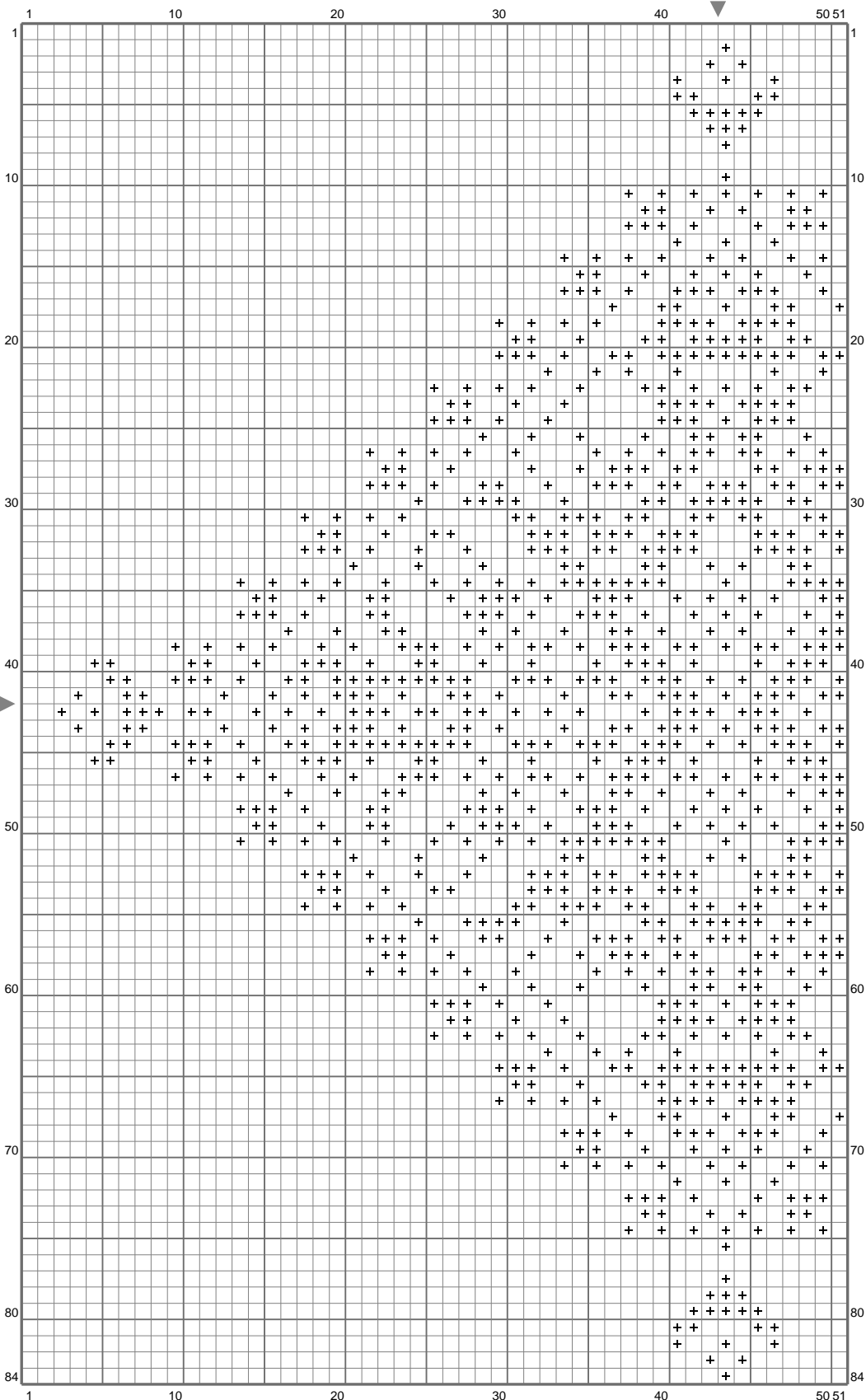


## Motif étoile

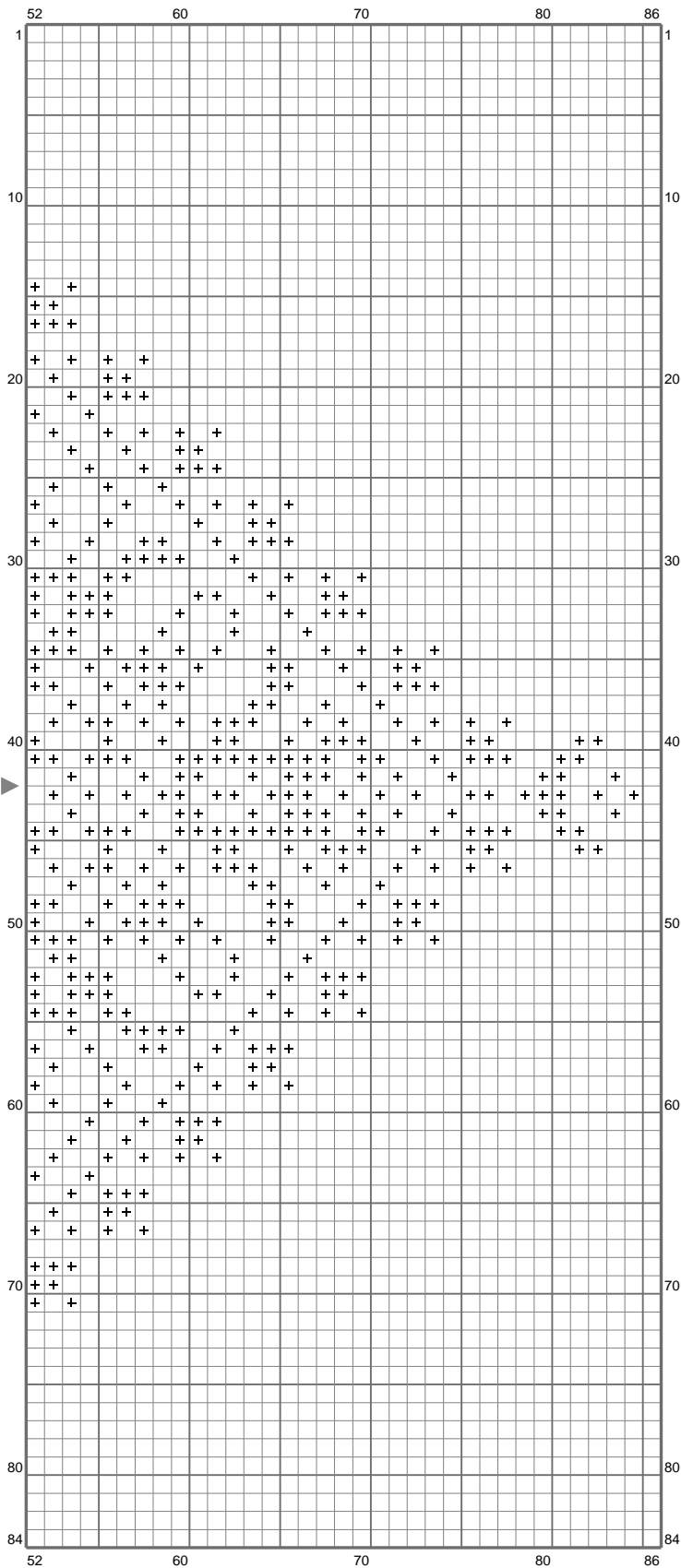


# Motif étoile



(This chart is printed using KG-Chart LE for Cross Stitch.)

# Motif étoile




(This chart is printed using KG-Chart LE for Cross Stitch.)

## Motif étoile

Stitch Count: 86w x 84h  
Finished Size: 15.60 cm x 15.24 cm (14 ct./inch)  
Cloth: Le point de croix de martine  
Cloth's Color: White  
# of colors: 1 Colors

Color Table (DMC)

### **Cross Stitch**

 3842 (1404 ct)