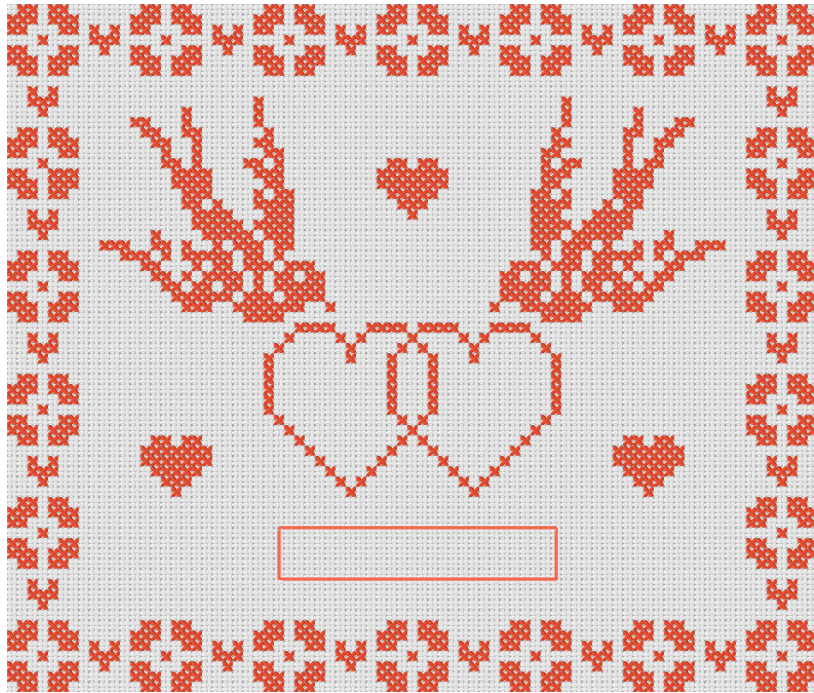
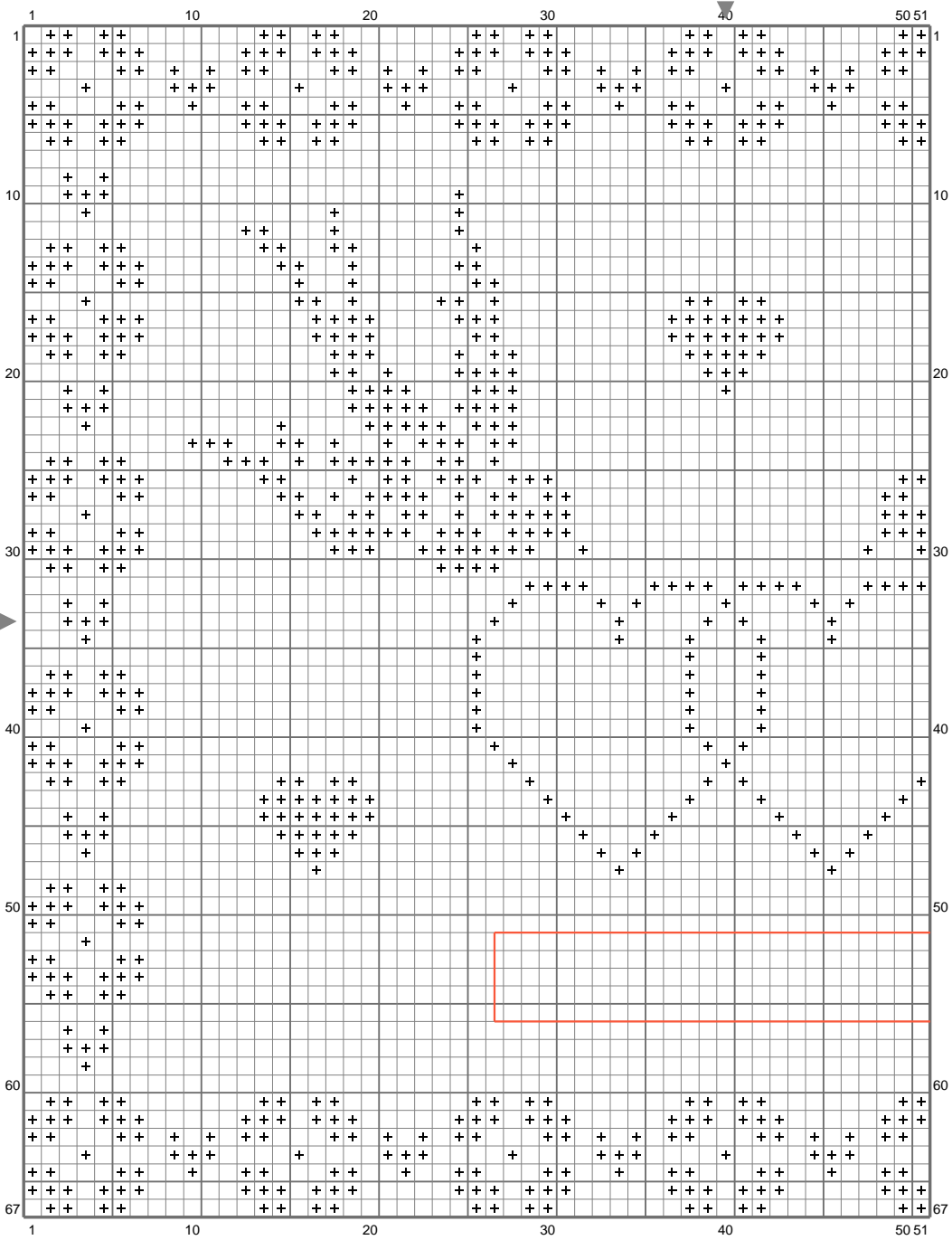


# Carte mariage

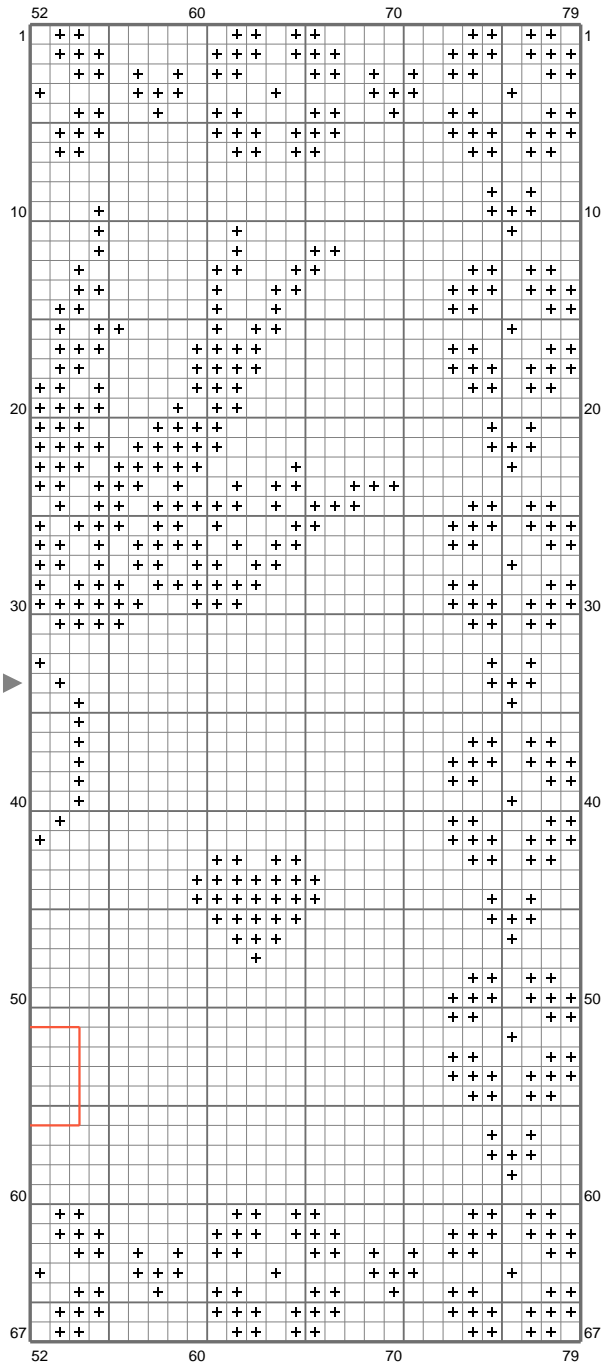


# Carte mariage



(This chart is printed using KG-Chart LE for Cross Stitch.)

# Carte mariage





(This chart is printed using KG-Chart LE for Cross Stitch.)

## Carte mariage


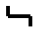
Stitch Count: 79w x 67h  
Finished Size: 6.68 cm x 5.67 cm (60 ct./inch)  
Cloth: Le point de croix de Martine  
Cloth's Color: White  
# of colors: 2 Colors

### Color Table (DMC)

#### **Cross Stitch**

 947 (1266 ct)  
 947 (1266 ct)

#### **Backstitch**

 947 (4 ct)  
 947 (4 ct)