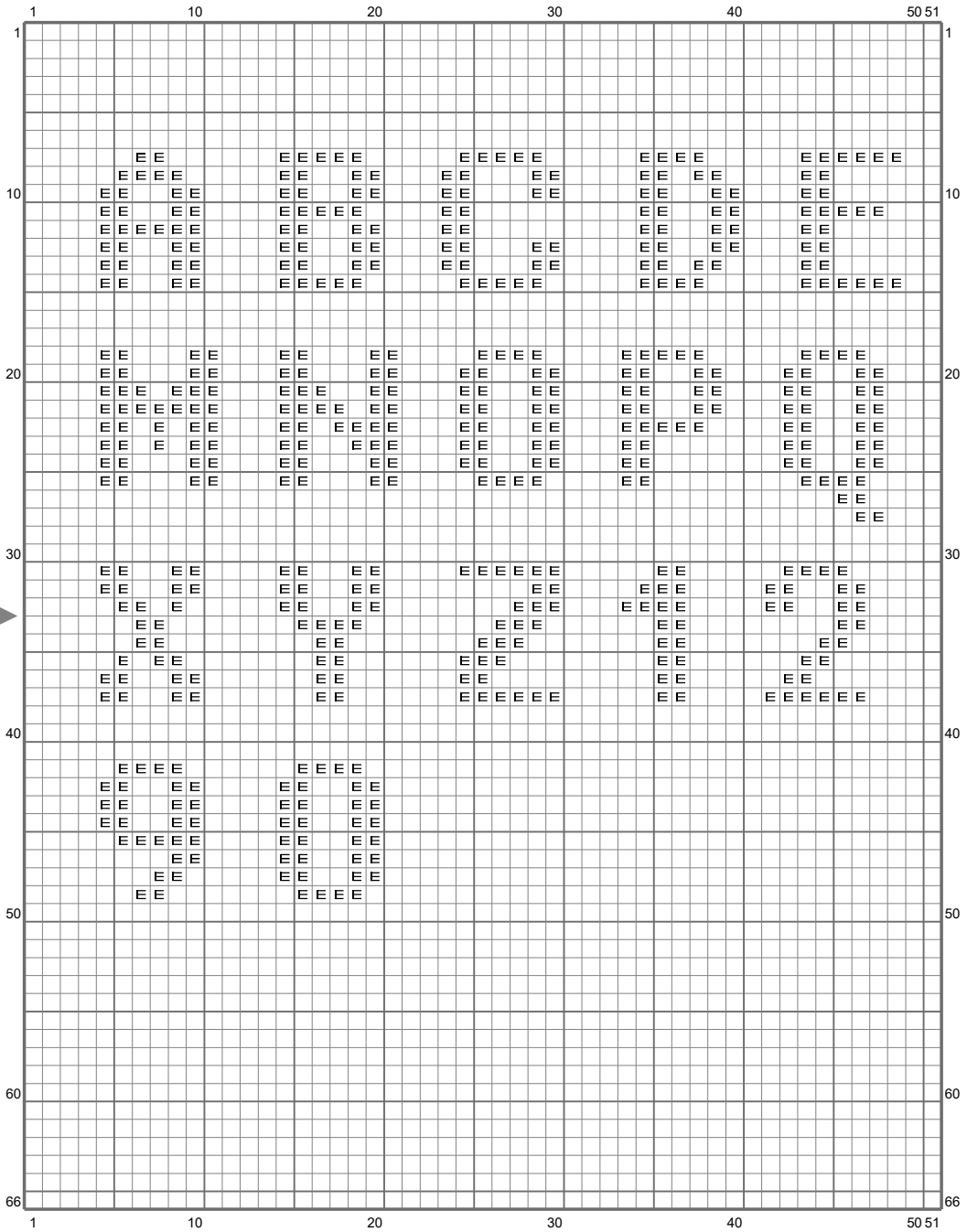


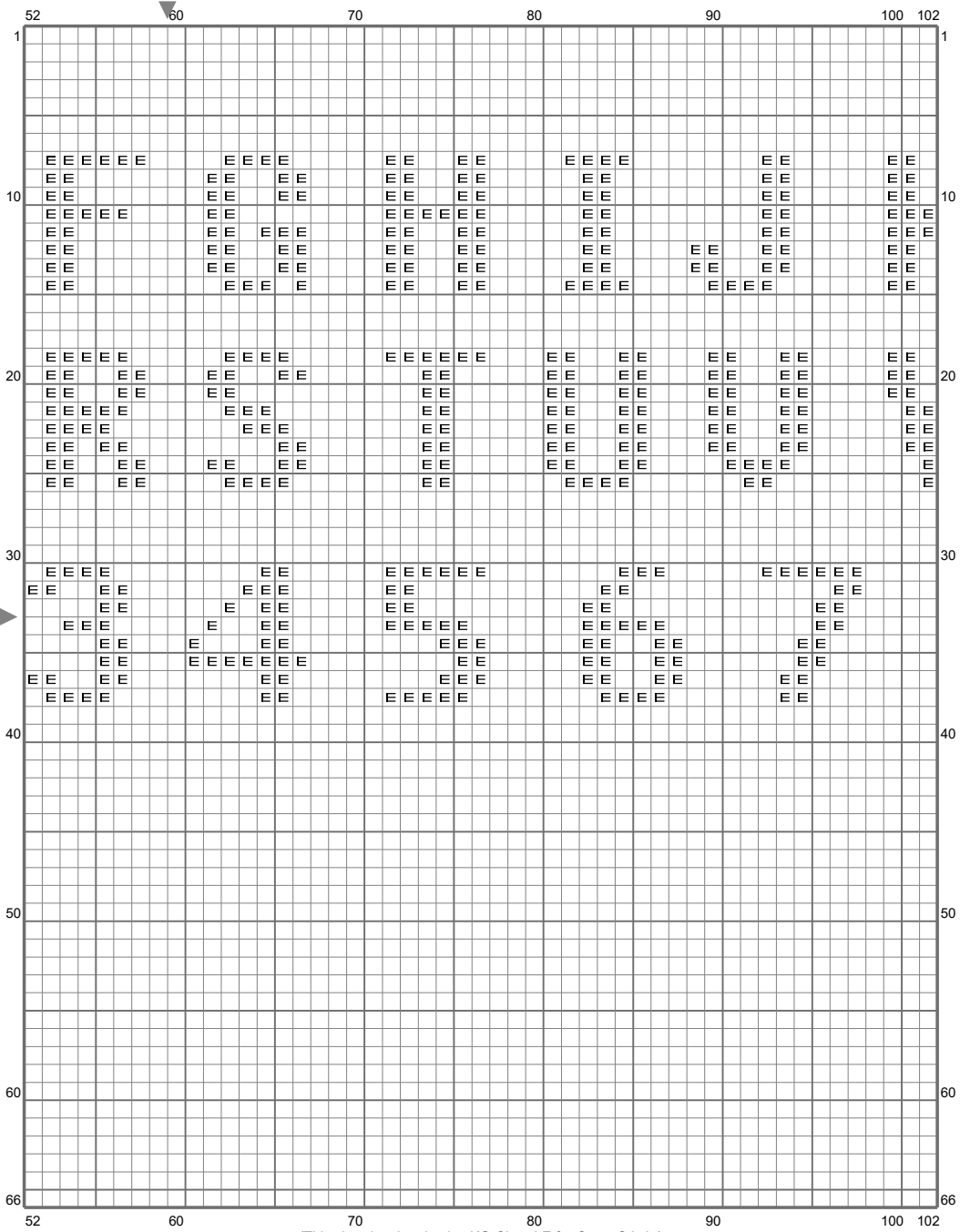
lettres majuscules



# lettres majuscules

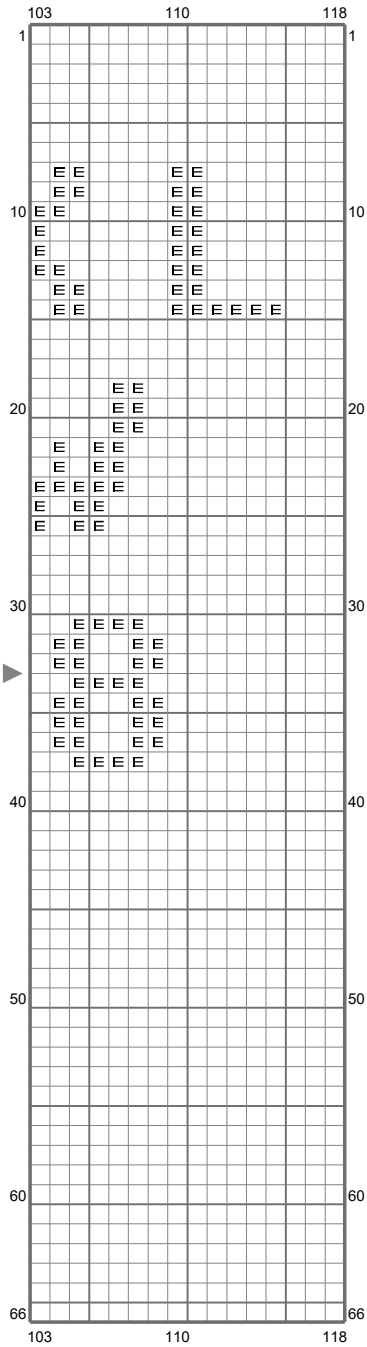


# lettres majuscules



(This chart is printed using KG-Chart LE for Cross Stitch.)

# lettres majuscules



Stitch Count: 118w x 66h  
 Finished Size: 10.70 cm x 5.98 cm (28 ct./inch)  
 Cloth: Le point de croix de martine  
 Cloth's Color: White  
 # of colors: 1 Colors

## Color Table (DMC)

### Cross Stitch

**E** 349 (1030 ct)

(This chart is printed using KG-Chart LE for Cross Stitch.)