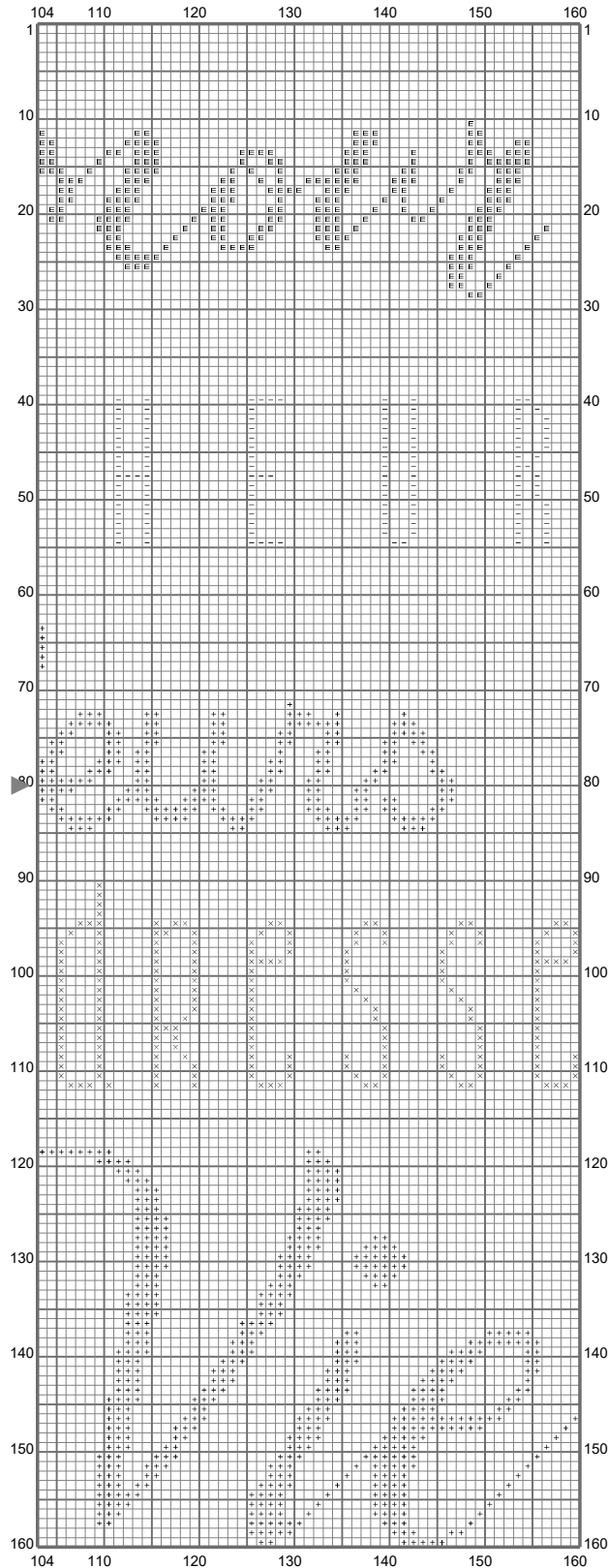


(This chart is printed using KG-Chart LE for Cross Stitch.)






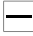


(This chart is printed using KG-Chart LE for Cross Stitch.)

## Gazouillis [www.pointdecroixdemartine.fr](http://www.pointdecroixdemartine.fr)

Stitch Count: 160w x 160h  
Finished Size: 29.02 cm x 29.02 cm (28 ct./inch)  
Cloth: Aida  
Cloth's Color: White  
# of colors: 6 Colors

### Color Table (DMC)

#### **Cross Stitch**

	798	(1480 ct)
	798	(1480 ct)
	601	(1084 ct)
	742	(228 ct)
	700	(546 ct)
	740	(299 ct)