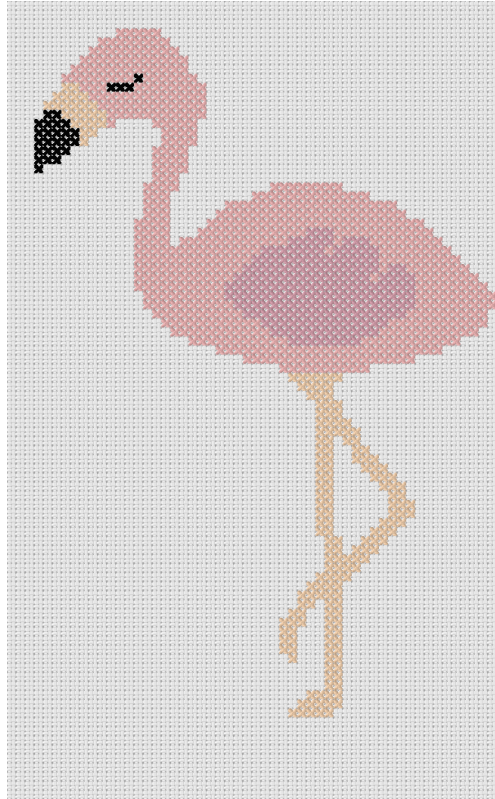
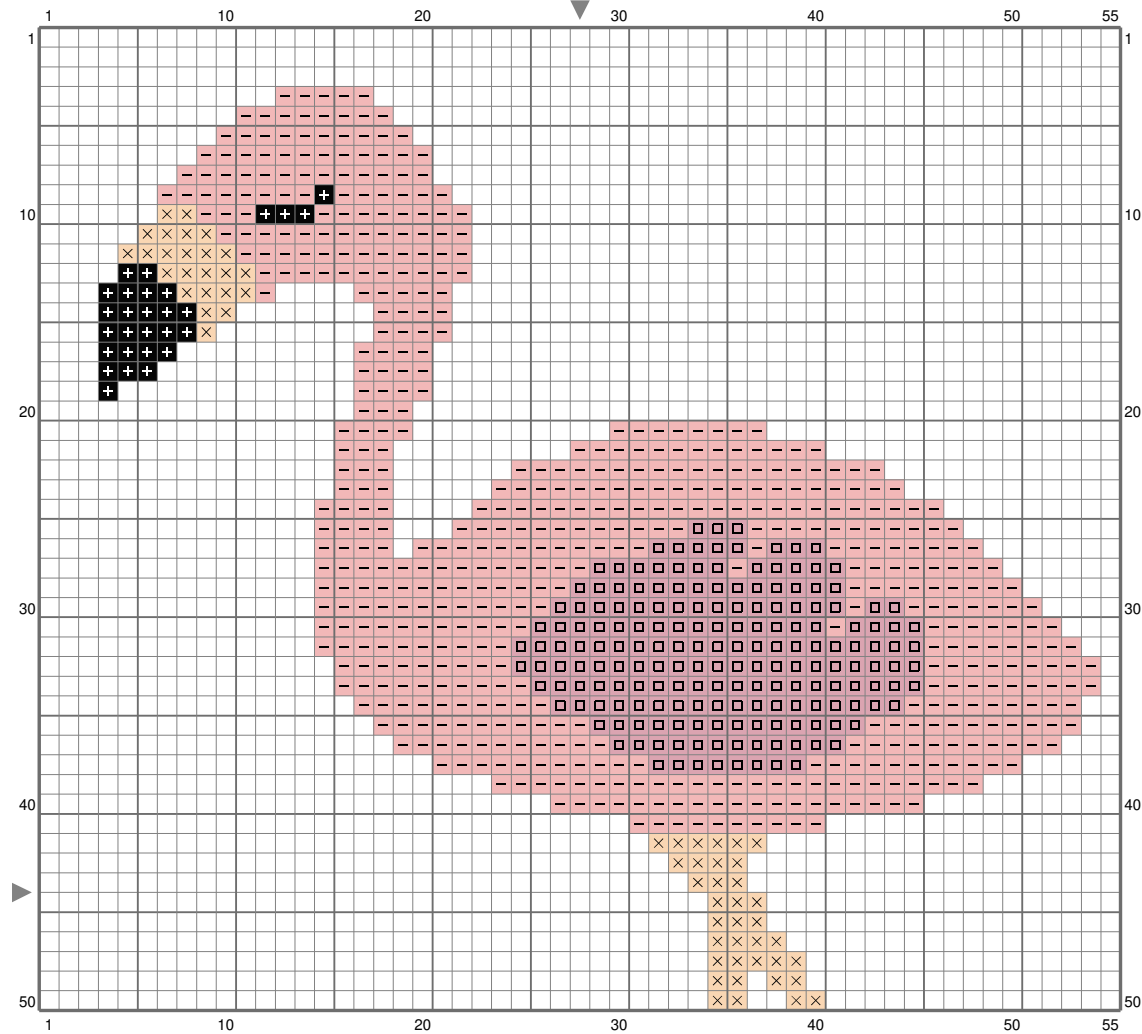


Flamand rose

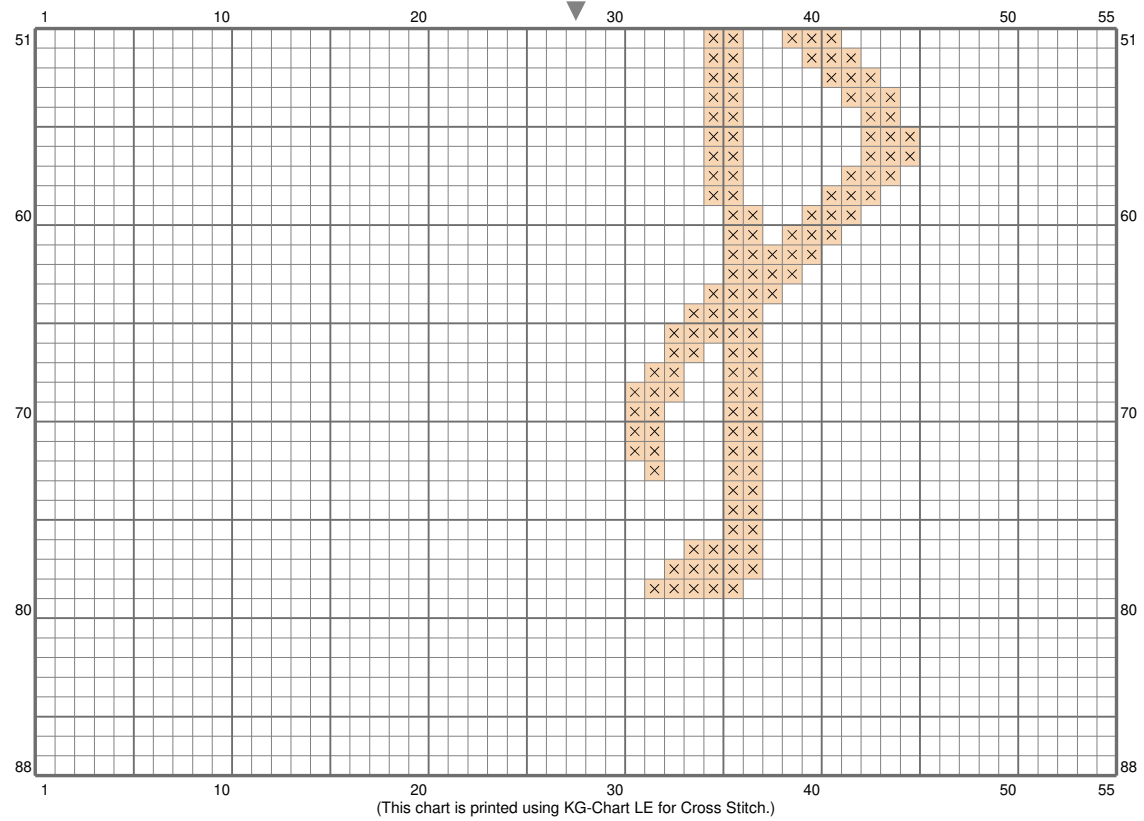


Flamand rose



(This chart is printed using KG-Chart LE for Cross Stitch.)

Flamand rose



Flamand rose

Stitch Count: 55w x 88h

Finished Size: 9.97 cm x 15.96 cm (28 ct./inch)





Cloth: Le point de croix de martine

Cloth's Color: White

of colors: 4 Colors

Color Table (DMC)

Cross Stitch

	310	(28 ct)
	224	(570 ct)
	738	(184 ct)
	778	(187 ct)