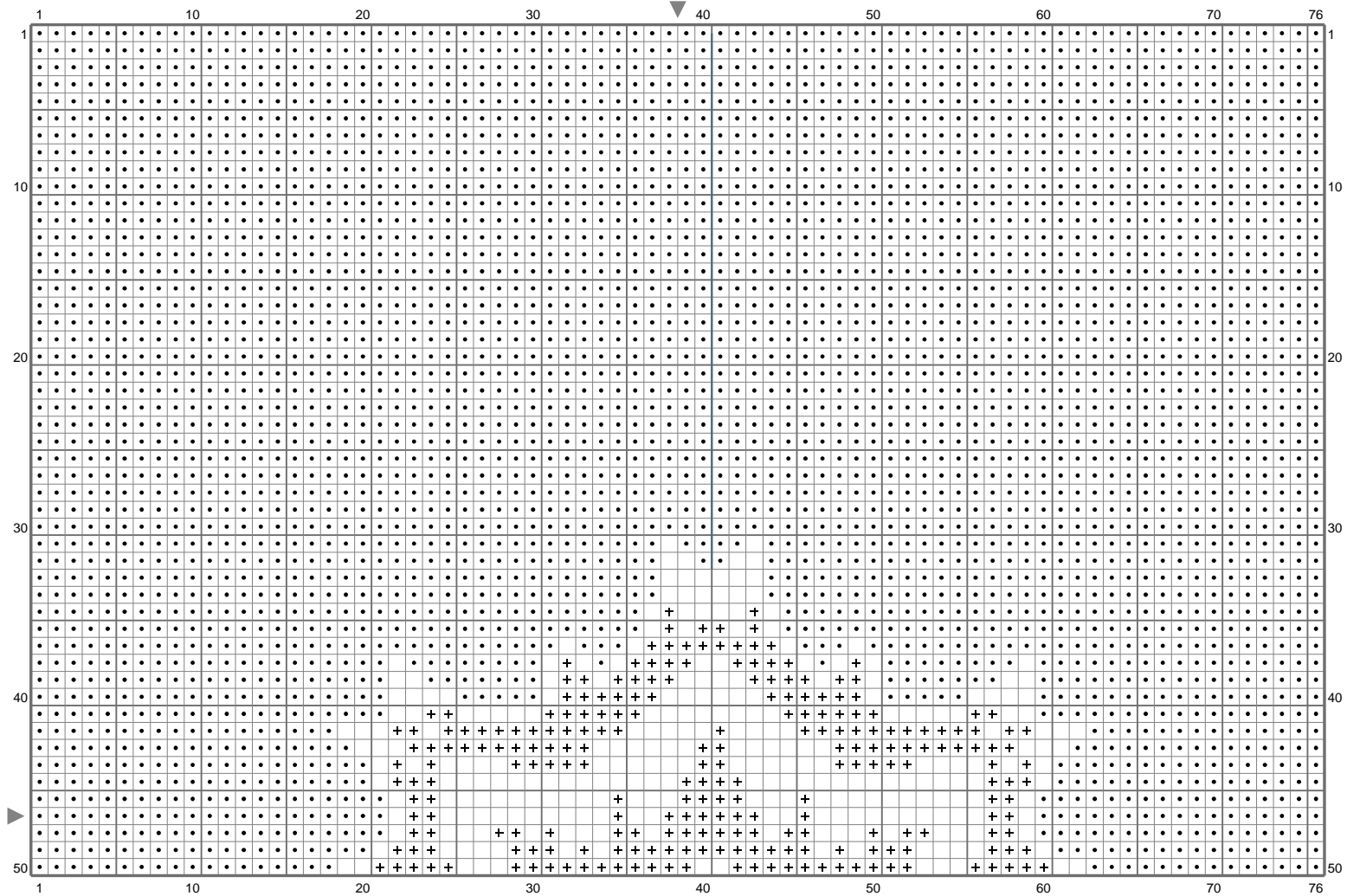
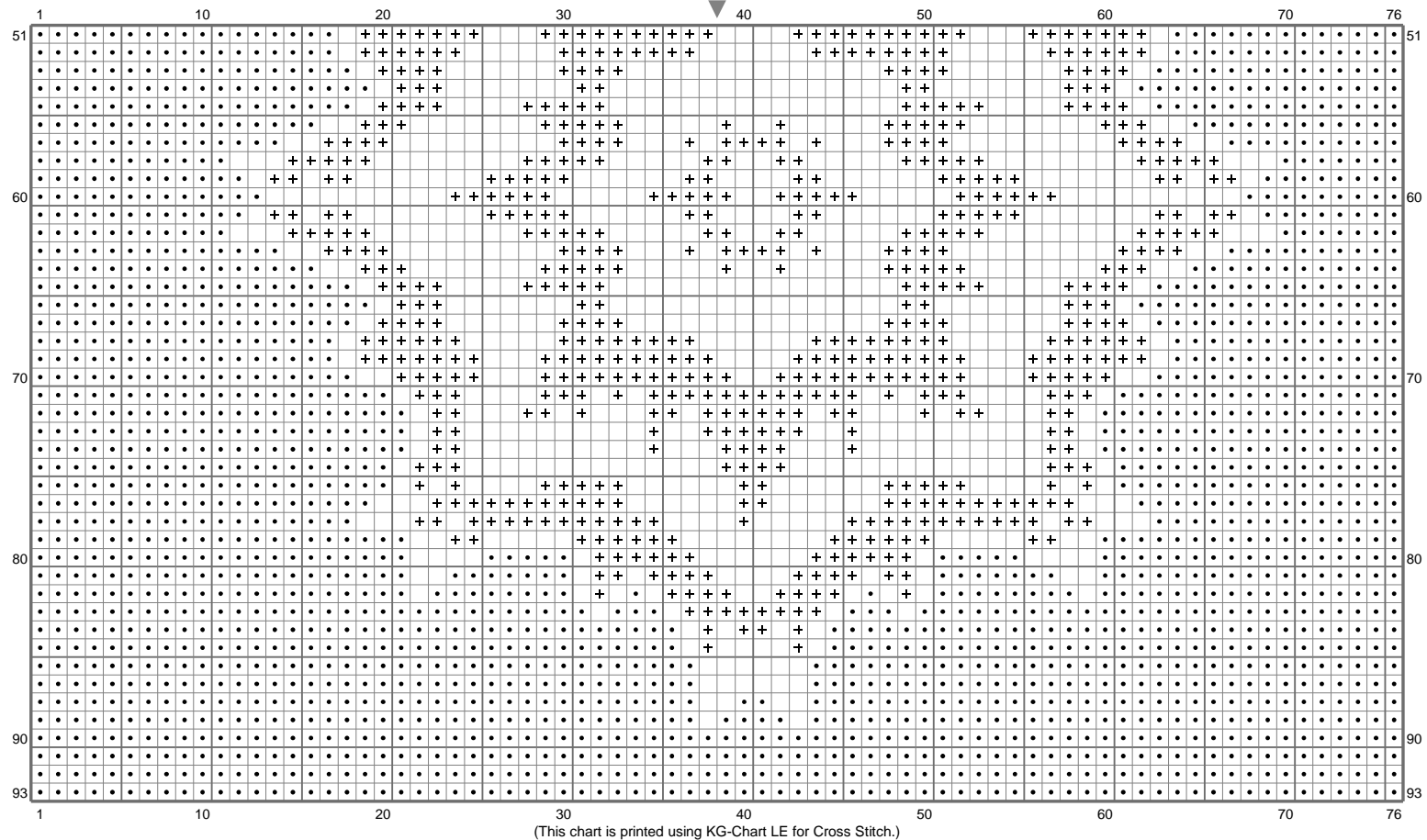


Etoile de Noël



(This chart is printed using KG-Chart LE for Cross Stitch.)

Etoile de Noël



Etoile de Noël

Stitch Count: 76w x 93h

Finished Size: 13.78 cm x 16.87 cm (14 ct./inch)

Cloth: Aida

Cloth's Color: White

of colors: 2 Colors

Color Table (DMC)

Cross Stitch

⊕ 930 (888 ct)

● 648 (5102 ct)

Backstitch

↵ 930 (1 ct)