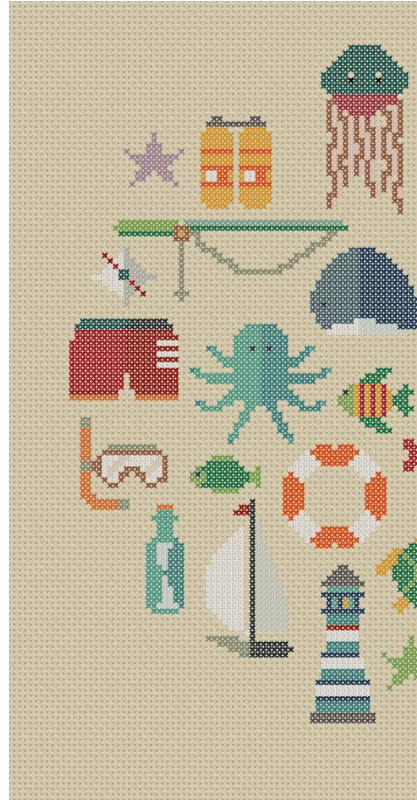


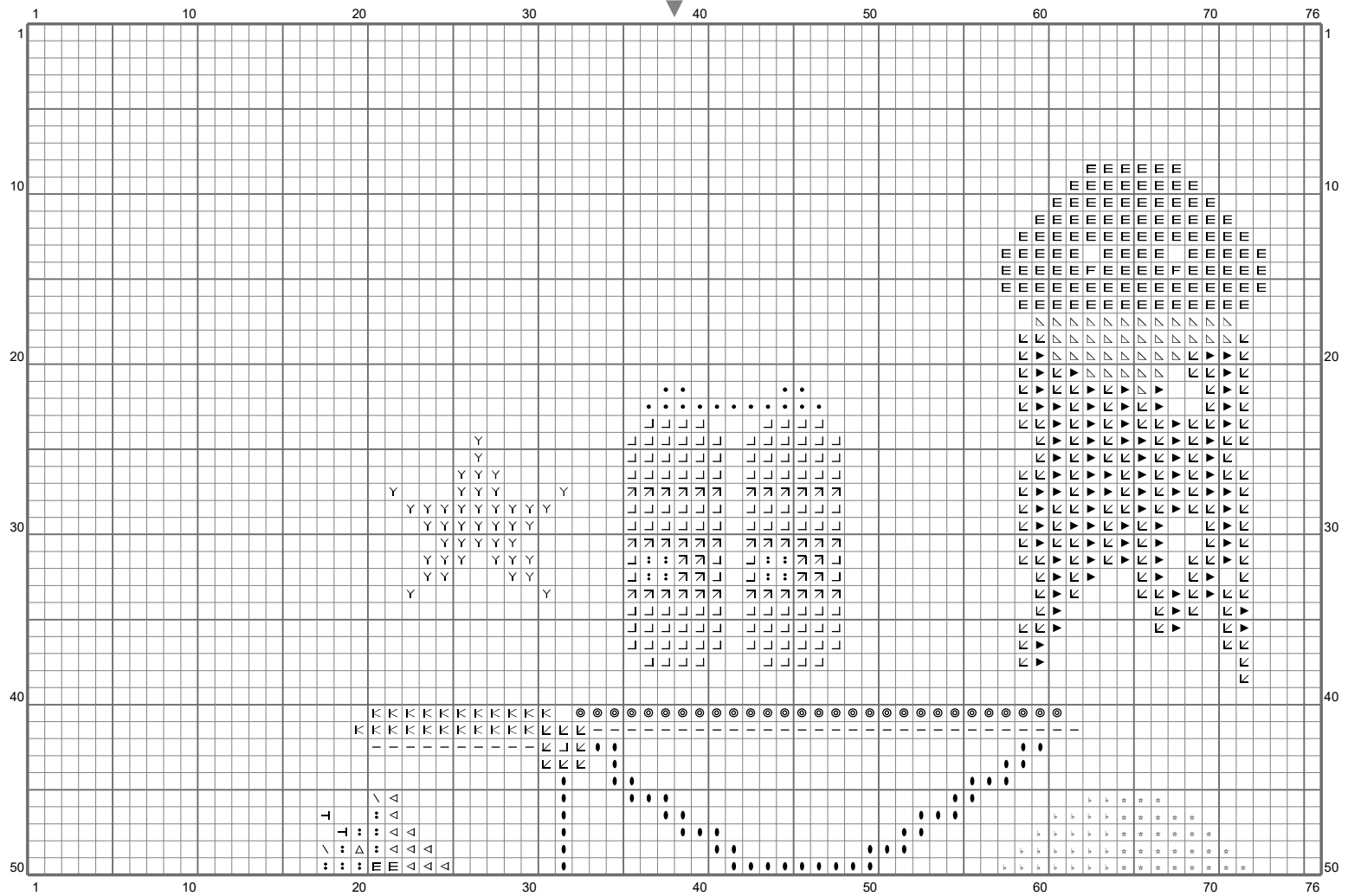
Collection marine (1)



Le point de croix de martine

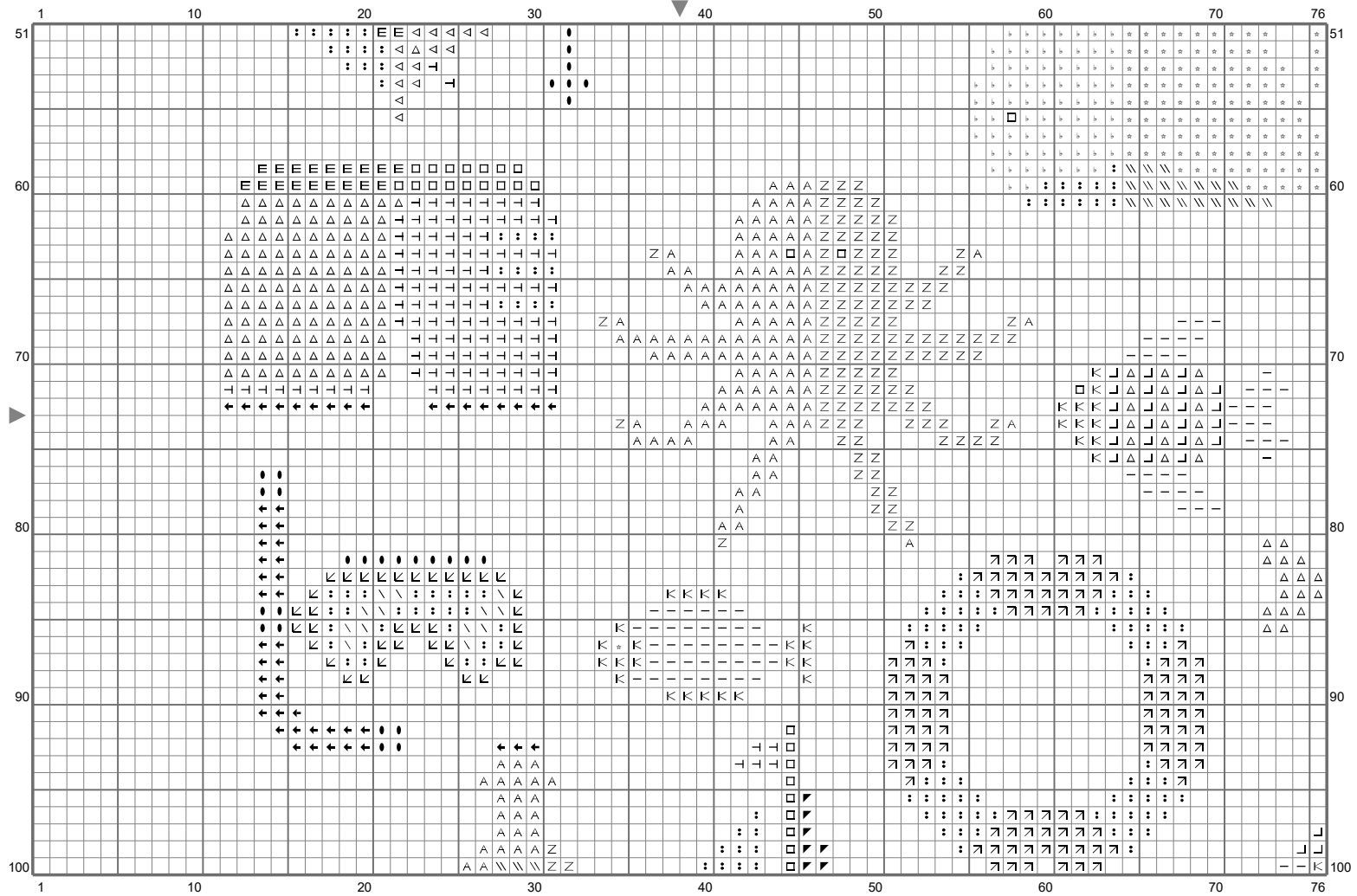


Collection marine (1)



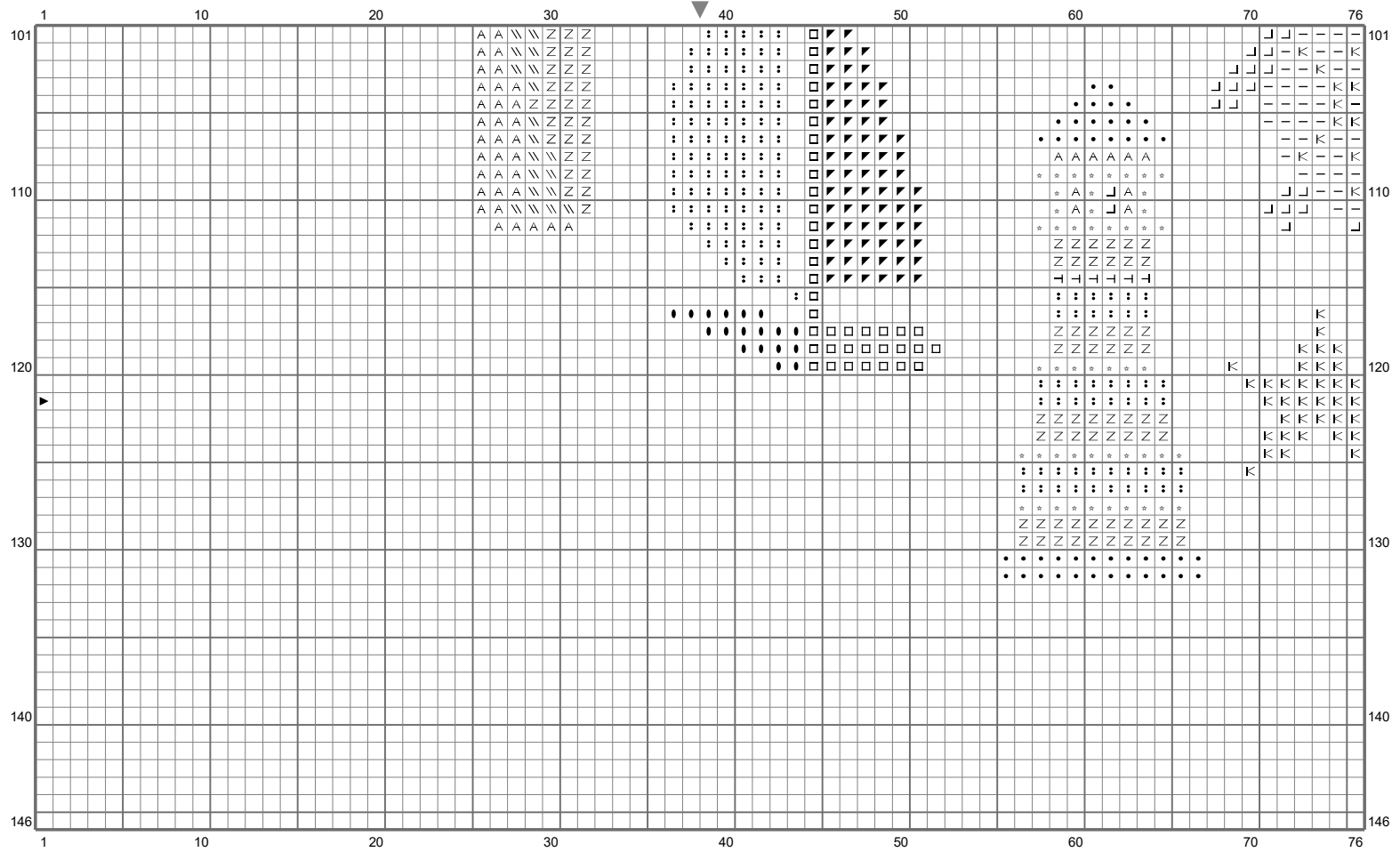
(This chart is printed using KG-Chart LE for Cross Stitch.)

Collection marine (1)



(This chart is printed using KG-Chart LE for Cross Stitch.)

Collection marine (1)



Collection marine (1)

Stitch Count: 76w x 146h

Finished Size: 27.57 cm x 52.97 cm (14 ct./inch)














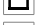

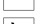
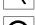
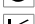
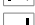



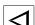



Cloth: Le point de croix de martine

Cloth's Color: 677 (Palette)

of colors: 26 Colors

Color Table (DMC)

Cross Stitch

 B5200 (302 ct)	 3756 (41 ct)	
 225 (84 ct)	 3777 (125 ct)	
 F 310 (2 ct)	 E 3808 (130 ct)	
 321 (145 ct)	 Z 3810 (209 ct)	
 355 (37 ct)	 A 3849 (183 ct)	
 434 (161 ct)	 3853 (54 ct)	
 Y 451 (43 ct)		
 500 (68 ct)		
 522 (93 ct)		
 535 (59 ct)		
 543 (15 ct)		
 563 (29 ct)		
 K 704 (104 ct)		
 J 742 (167 ct)		
 910 (154 ct)		
 b 930 (99 ct)		
 946 (154 ct)		
 3023 (24 ct)		
 3072 (78 ct)		
 3750 (181 ct)		