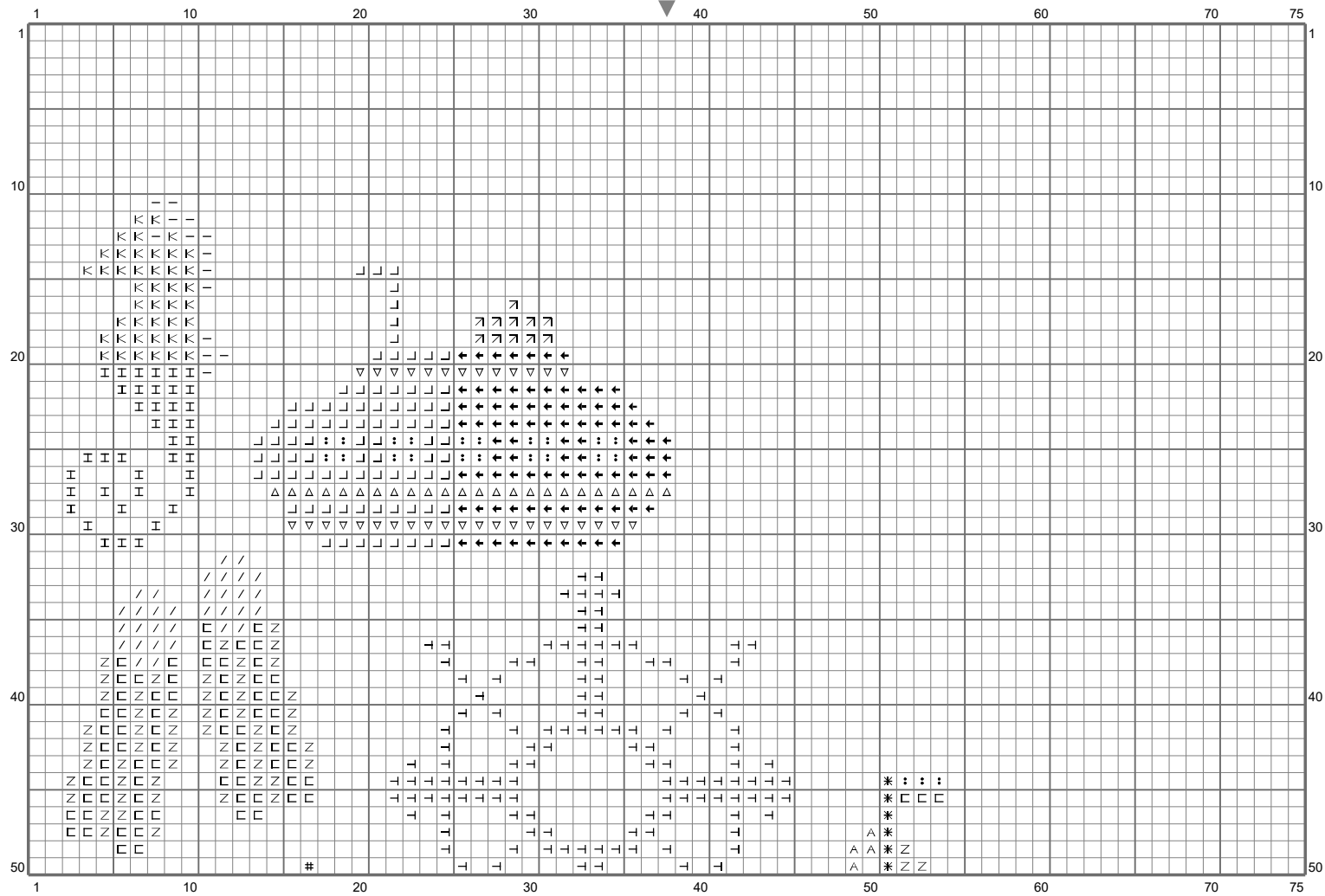


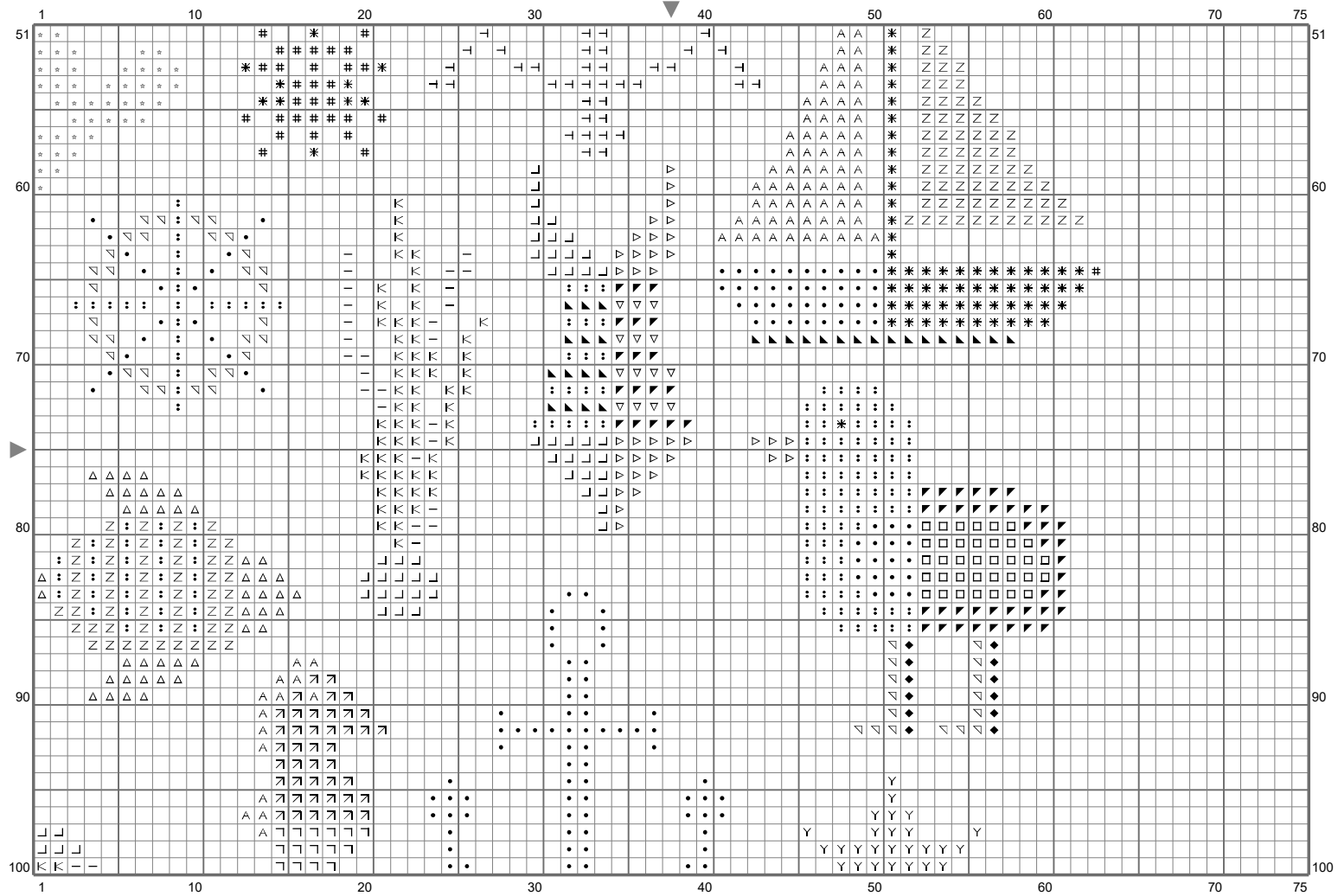


Collection marine (2)



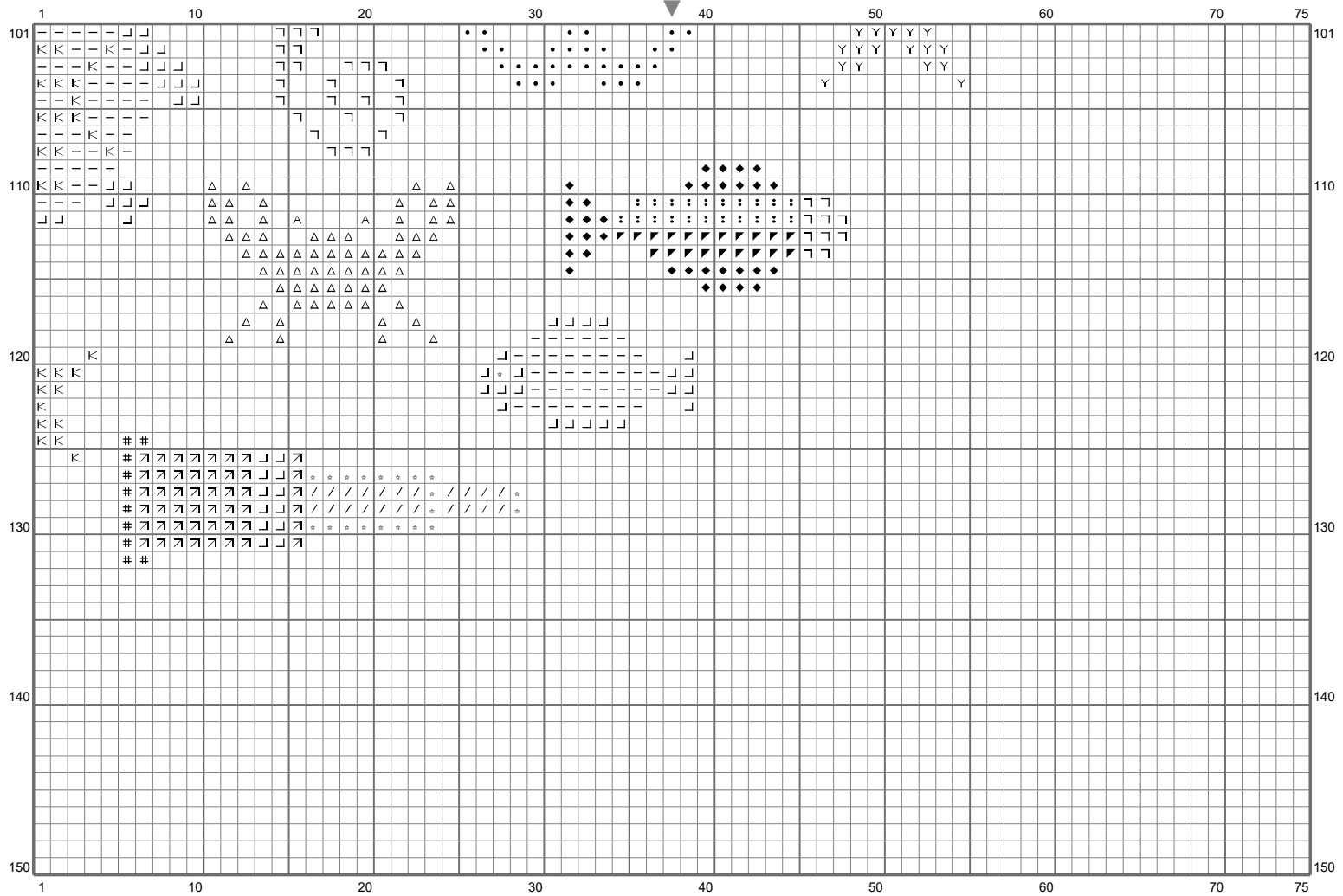
(This chart is printed using KG-Chart LE for Cross Stitch.)

Collection marine (2)



(This chart is printed using KG-Chart LE for Cross Stitch.)

Collection marine (2)



(This chart is printed using KG-Chart LE for Cross Stitch.)

Collection marine (2)

Stitch Count: 75w x 150h

Finished Size: 27.21 cm x 54.42 cm (14 ct./inch)






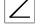







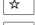
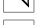
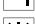
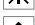
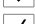


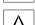





Cloth: Le point de croix de martine

Cloth's Color: 677 (Palette)

of colors: 26 Colors

Color Table (DMC)

Cross Stitch

 613 (30 ct)	 704 (133 ct)
 3852 (36 ct)	 3777 (168 ct)
 500 (36 ct)	 3810 (171 ct)
 470 (40 ct)	 535 (173 ct)
 451 (43 ct)	 742 (193 ct)
 3799 (42 ct)	 B5200 (193 ct)
 436 (48 ct)	
 3750 (65 ct)	
 3776 (48 ct)	
 900 (50 ct)	
 3021 (76 ct)	
 3855 (45 ct)	
 3809 (54 ct)	
 3072 (78 ct)	
 3846 (75 ct)	
 3849 (86 ct)	
 3853 (89 ct)	
 946 (102 ct)	
 321 (135 ct)	
 910 (125 ct)	