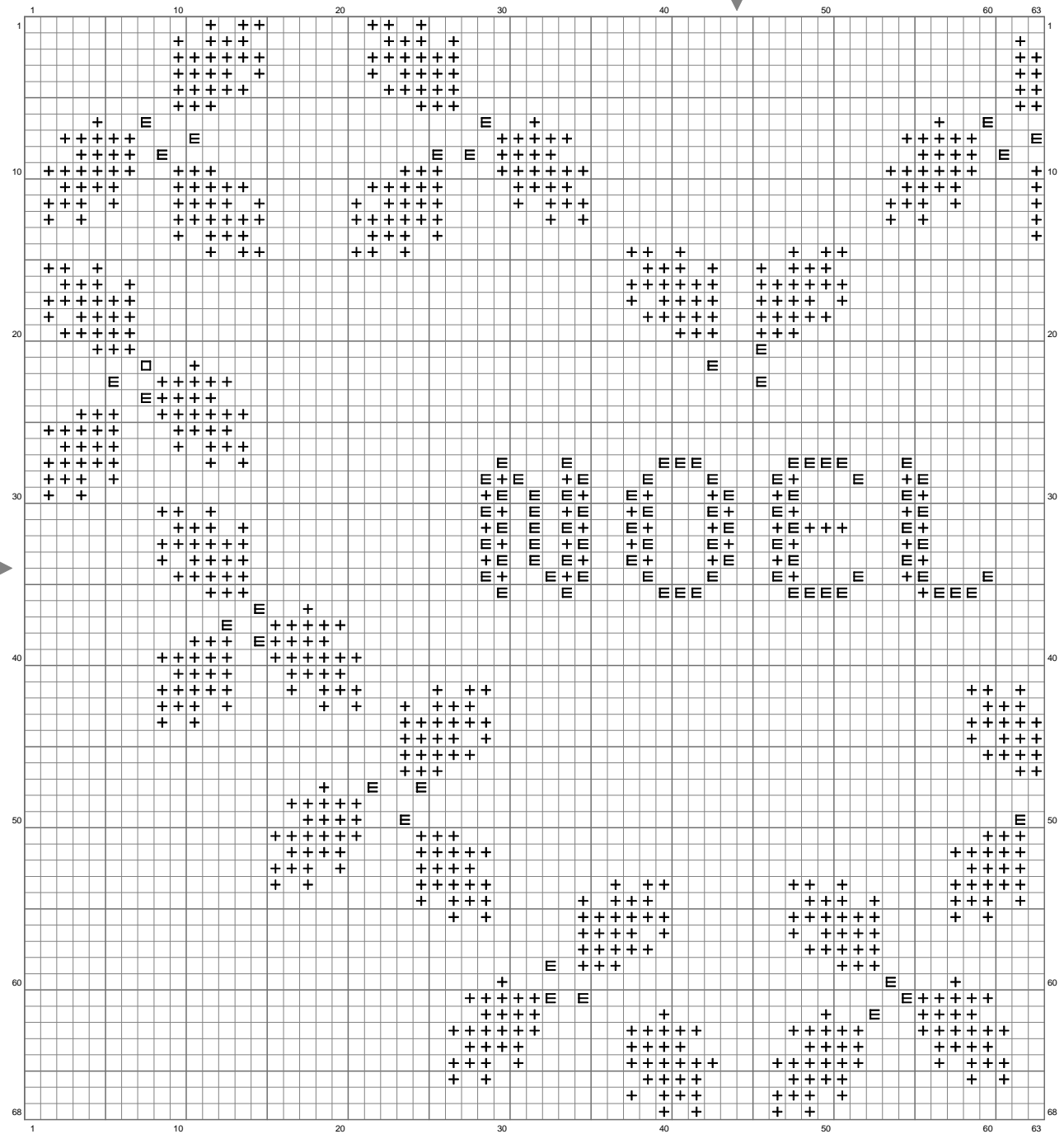
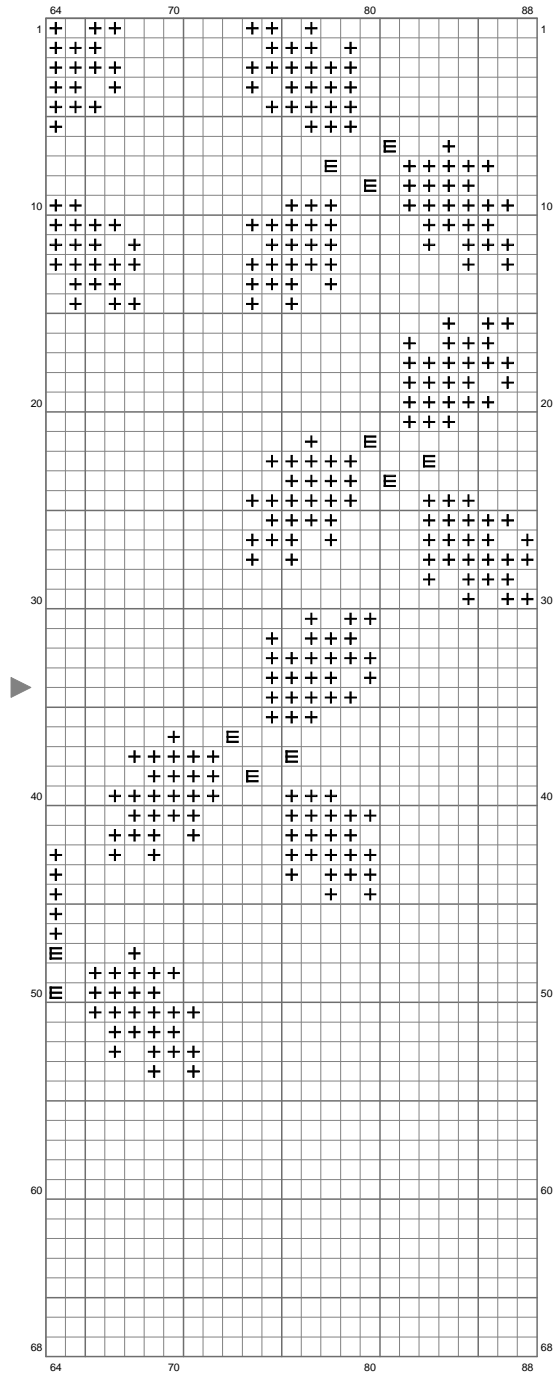


coeur houx L



(This chart is printed using KG-Chart LE for Cross Stitch.)

coeur houx L



(This chart is printed using KG-Chart LE for Cross Stitch.)

coeur houx L

Stitch Count: 88w x 68h

Finished Size: 7.45 cm x 5.75 cm (60 ct./inch)




Cloth: le point de croix de Martine - www.petitescroix.fr

Cloth's Color: White

of colors: 3 Colors

Color Table (DMC)

Cross Stitch

	988	(1012 ct)
	817	(112 ct)
	321	(1 ct)