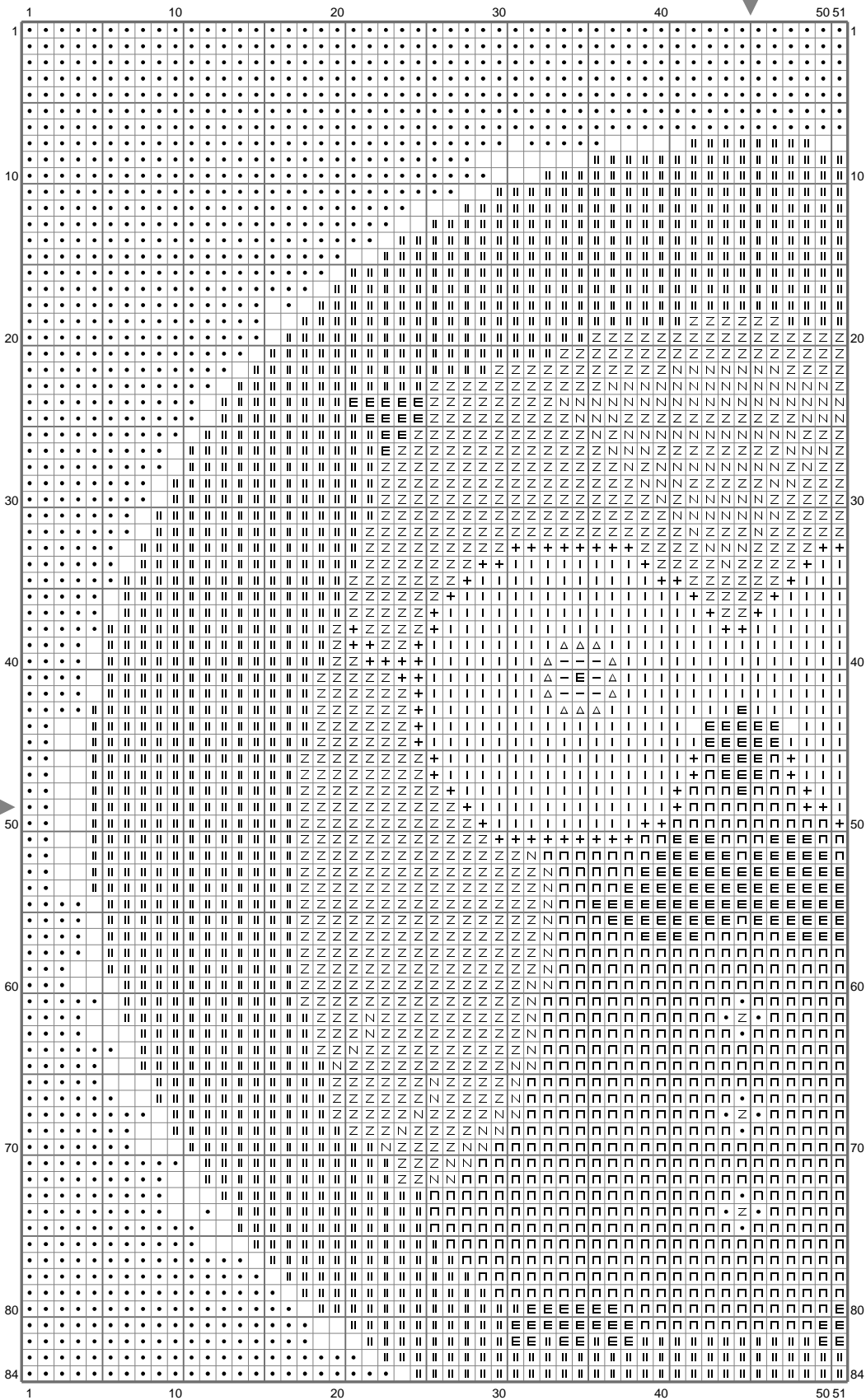
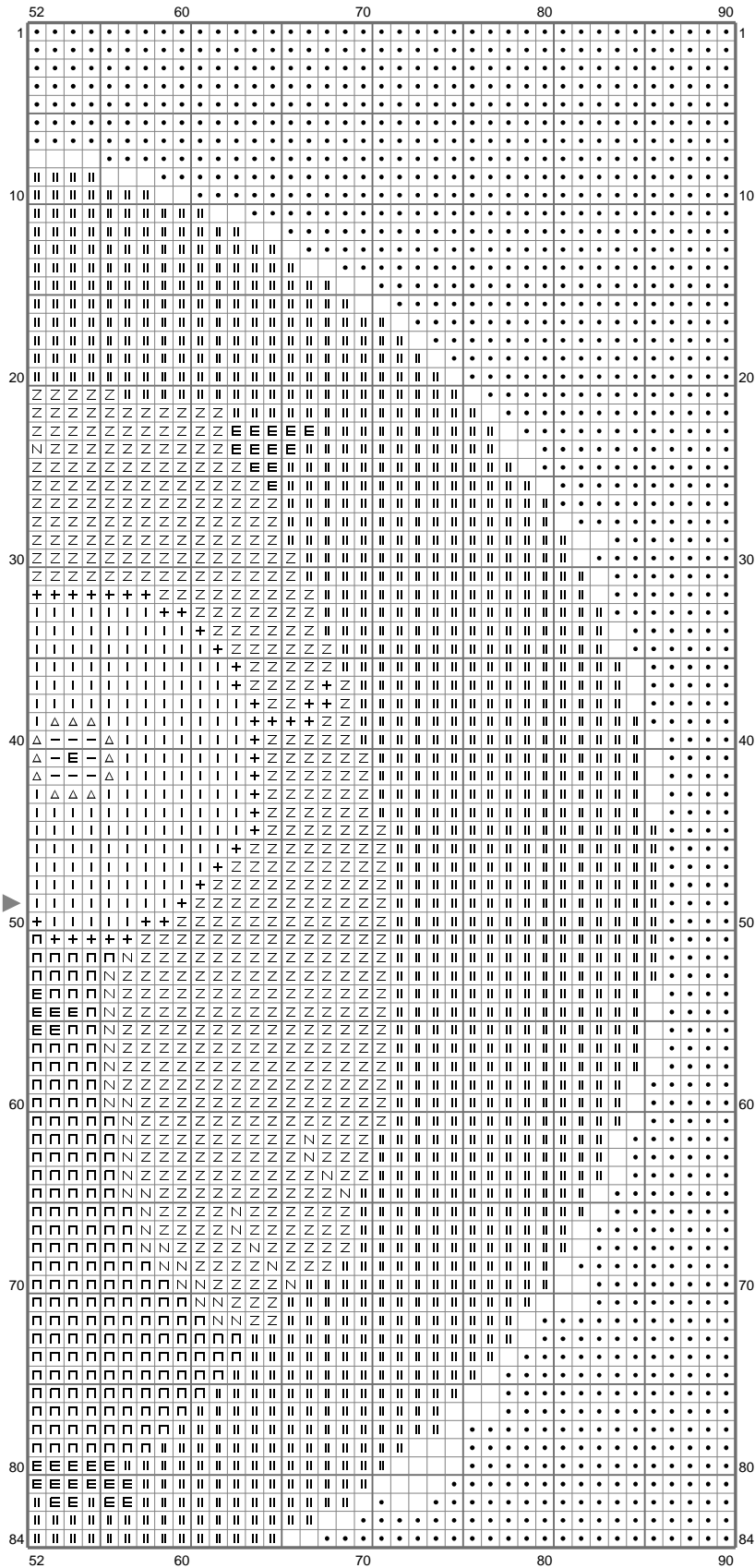


chouette à moustache



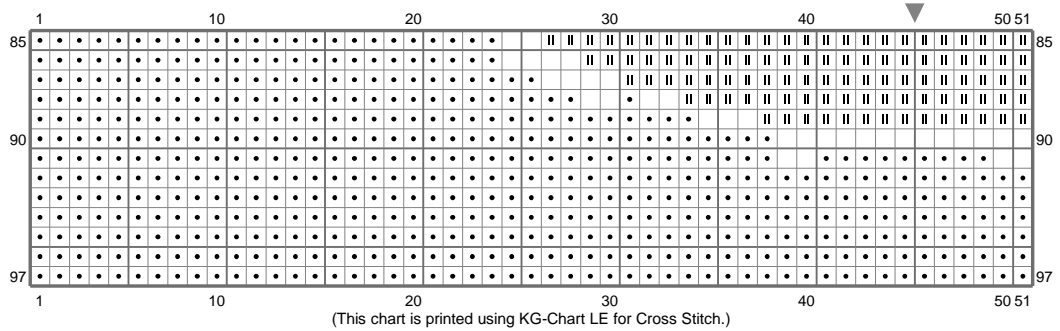
(This chart is printed using KG-Chart LE for Cross Stitch.)

chouette à moustache

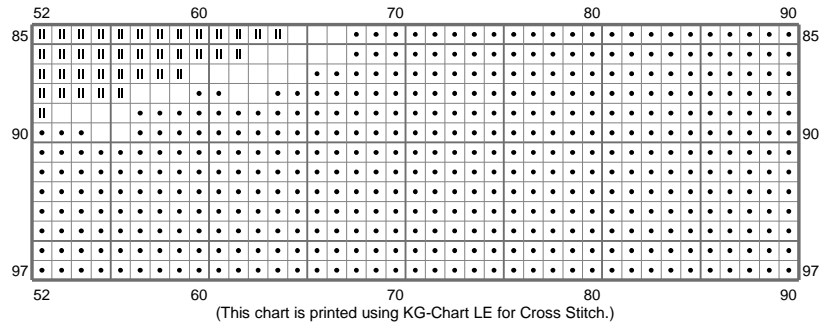


(This chart is printed using KG-Chart LE for Cross Stitch.)

chouette à moustache



chouette à moustache



Stitch Count: 90w x 97h
 Finished Size: 32.65 cm x 35.19 cm (14 ct./inch)
 Cloth: Le point de croix de martine
 Cloth's Color: White
 # of colors: 10 Colors

Color Table (DMC)

Cross Stitch

+	310	(106 ct)
E	939	(171 ct)
I	ECRU	(473 ct)
•	BLANC	(3198 ct)
II	677	(2393 ct)
Z	413	(1163 ct)
N	317	(172 ct)
P	3831	(726 ct)
Δ	3032	(24 ct)
—	779	(16 ct)