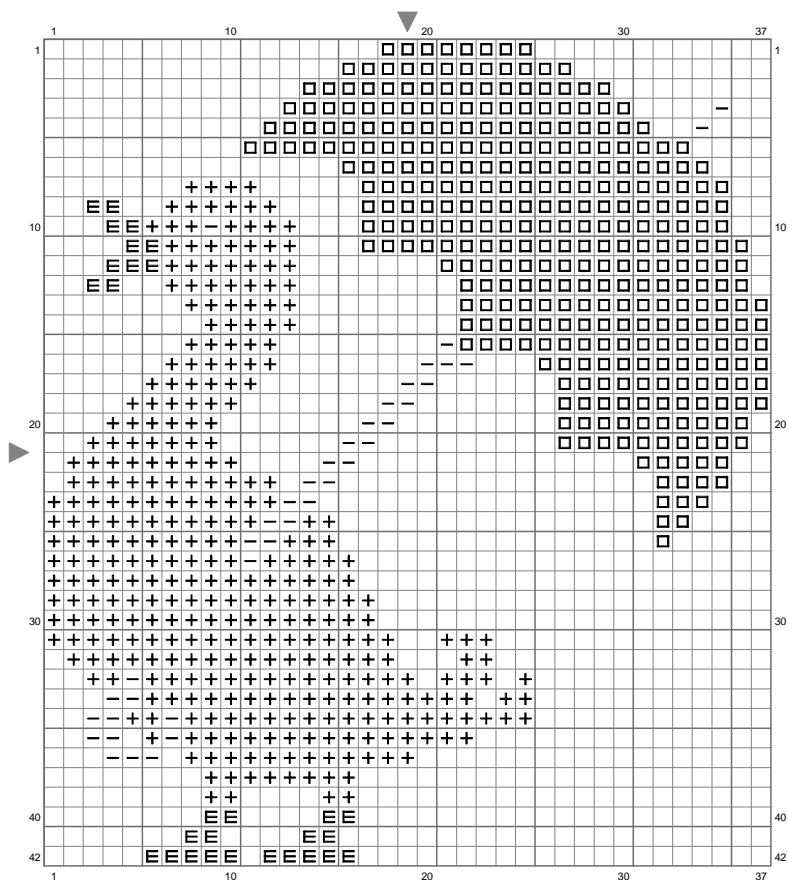


canard



(This chart is printed using KG-Chart LE for Cross Stitch.)

Stitch Count: 37w x 42h

Finished Size: 4.81 cm x 5.47 cm (39 ct./inch)

Cloth: Linen

Cloth's Color: White

of colors: 5 Colors

Color Table (DMC)

Cross Stitch

+	3078	(347 ct)
E	444	(29 ct)
□	817	(341 ct)
—	829	(38 ct)
⊕	3078	(347 ct)