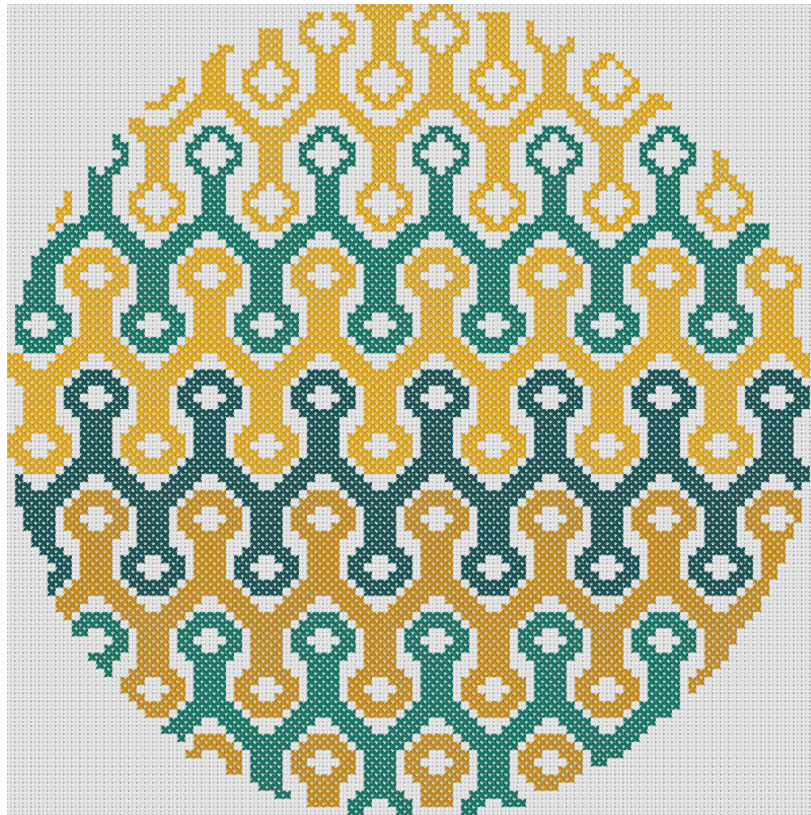
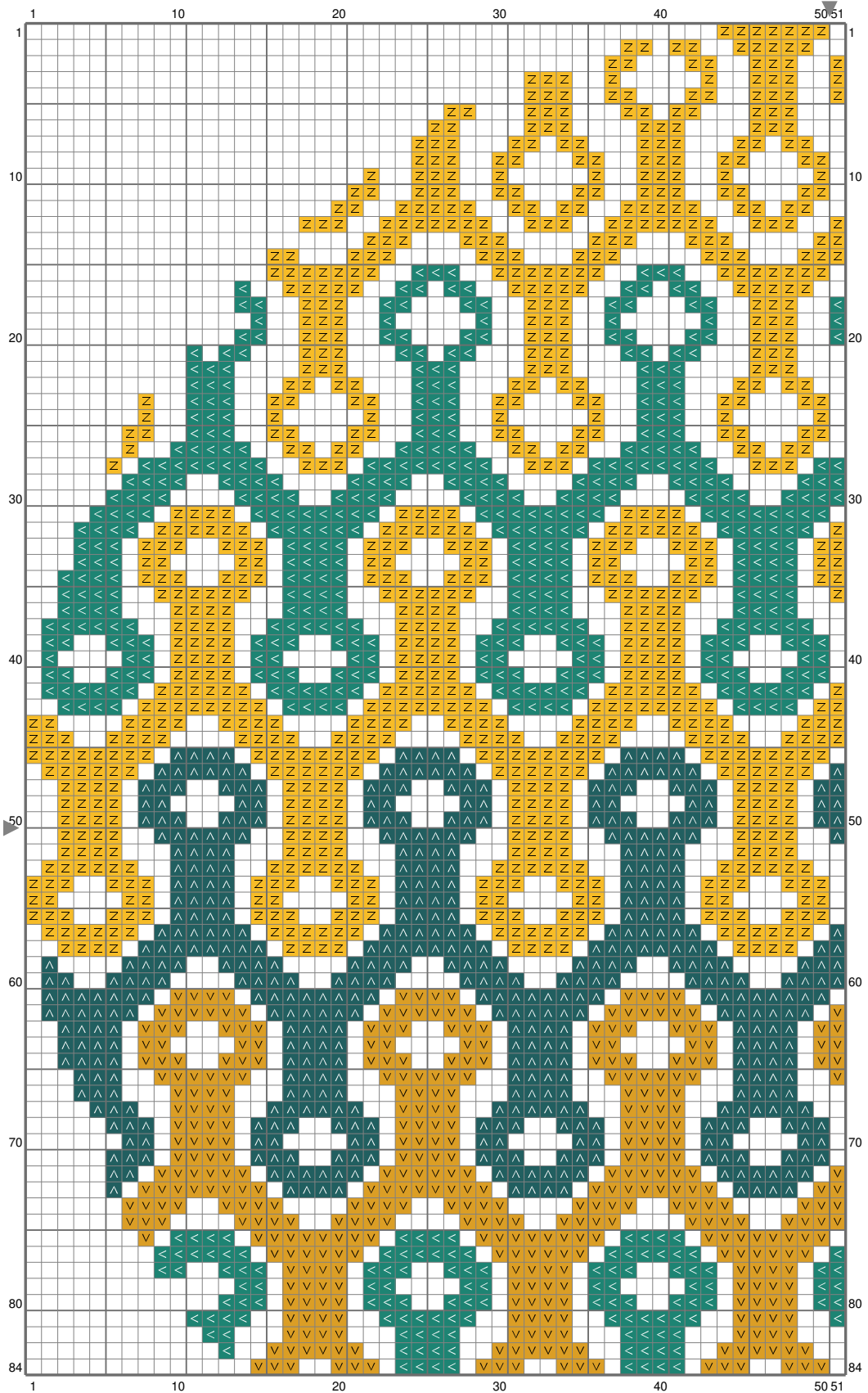


Motif géométrique

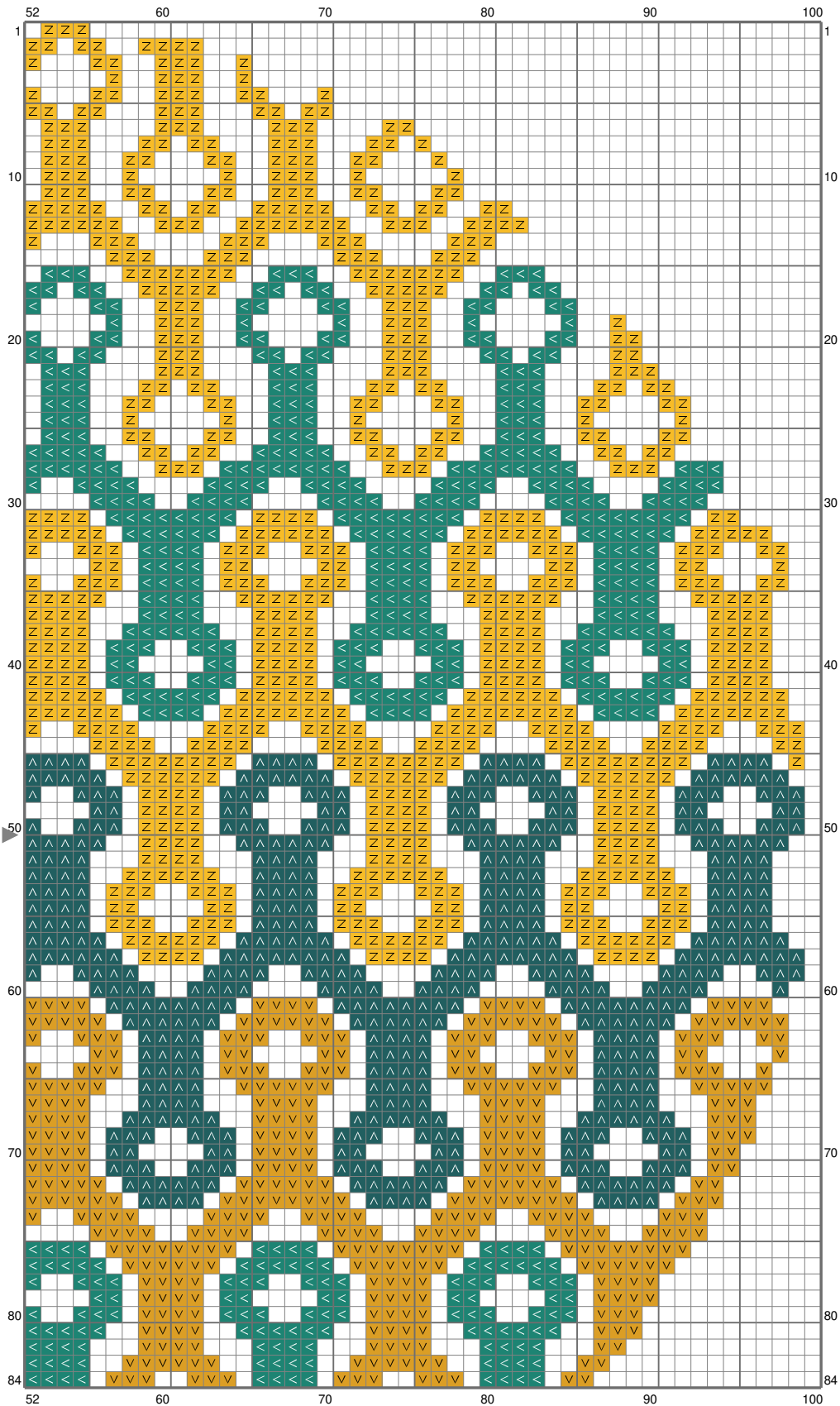


Motif géométrique



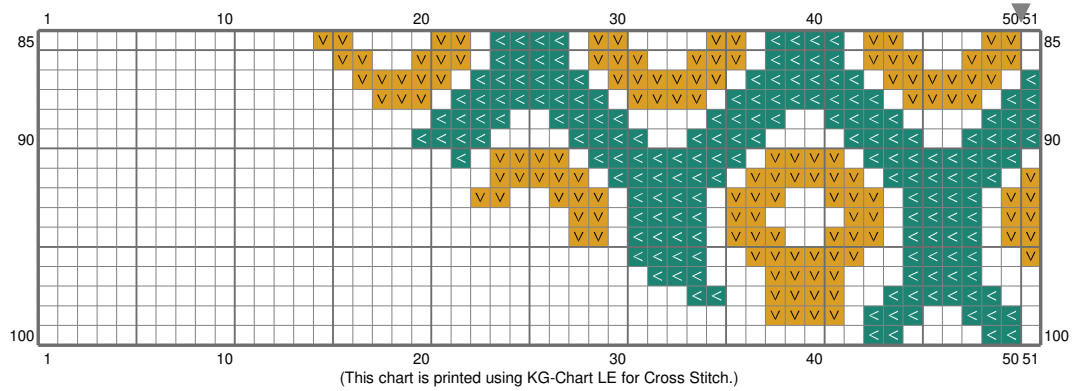
(This chart is printed using KG-Chart LE for Cross Stitch.)

Motif géométrique

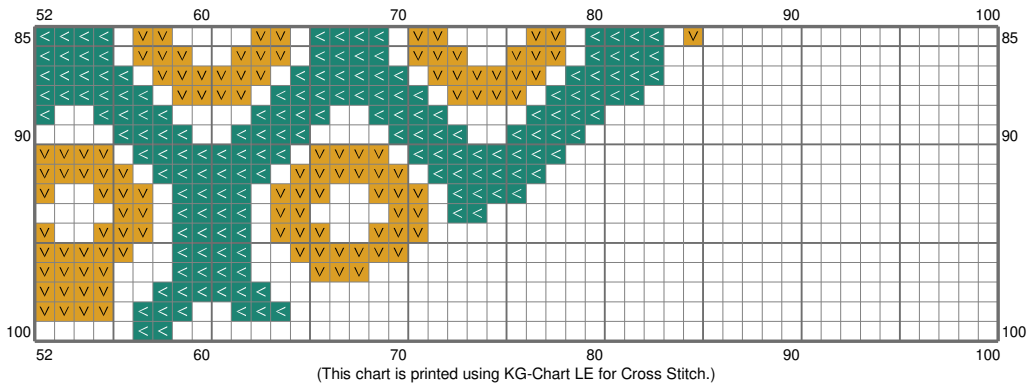


(This chart is printed using KG-Chart LE for Cross Stitch.)

Motif géométrique



Motif géométrique



Stitch Count: 100w x 100h
 Finished Size: 18.14 cm x 18.14 cm (28 ct./inch)
 Cloth: le point de croix de martine
 Cloth's Color: White
 # of colors: 4 Colors

Color Table (DMC)

Cross Stitch

▲	3808	(1014 ct)
▤	972	(1675 ct)
▼	3852	(1047 ct)
◀	943	(1419 ct)