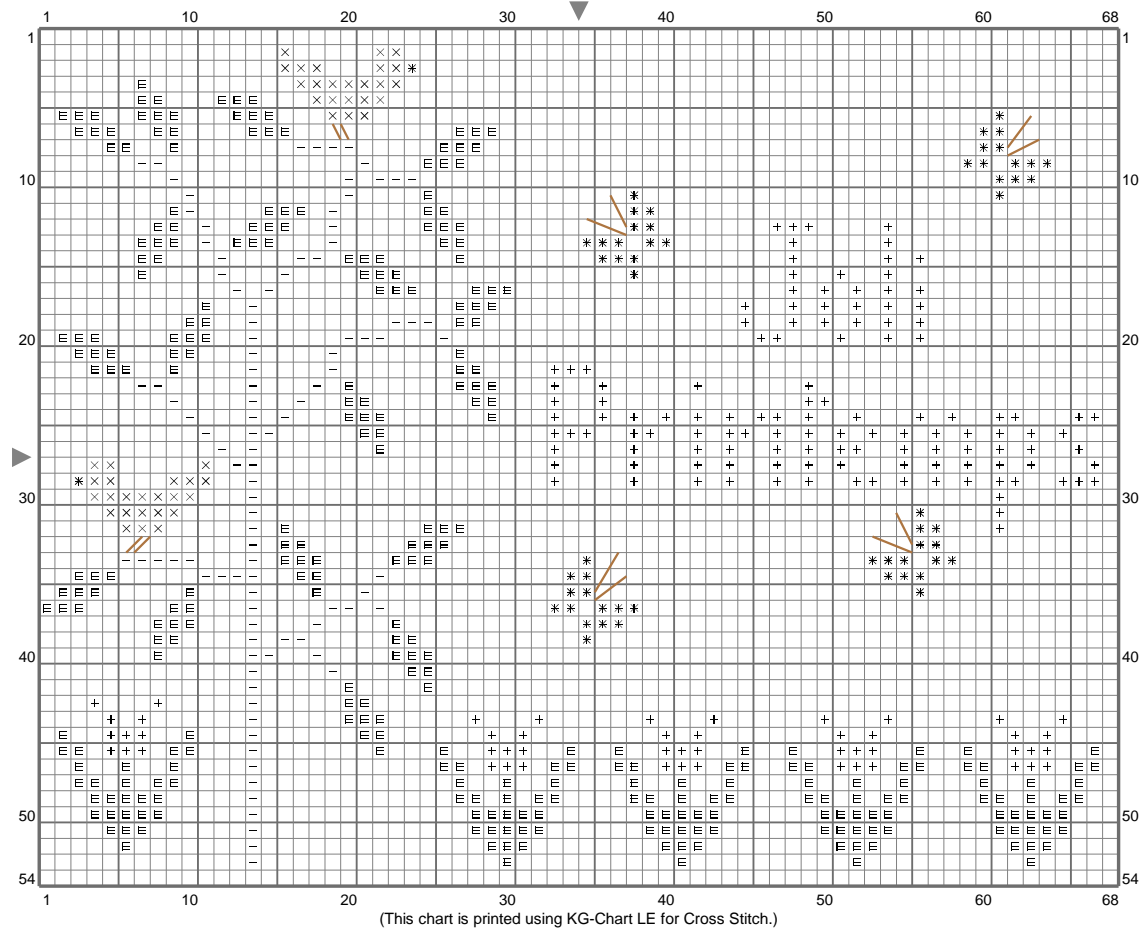


Joli Printemps



Stitch Count: 68w x 54h
 Finished Size: 8.85 cm x 7.03 cm (39 ct./inch)
 Cloth: Linen
 Cloth's Color: White
 # of colors: 6 Colors

Color Table (DMC)

Cross Stitch

- ⊗ 825 (46 ct)
- ✱ 973 (58 ct)
- ⊞ 3346 (309 ct)
- ⊕ 3805 (175 ct)
- ⊕ 3805 (175 ct)
- ⊖ 3829 (102 ct)

Backstitch

- ↙ 3829 (12 ct)