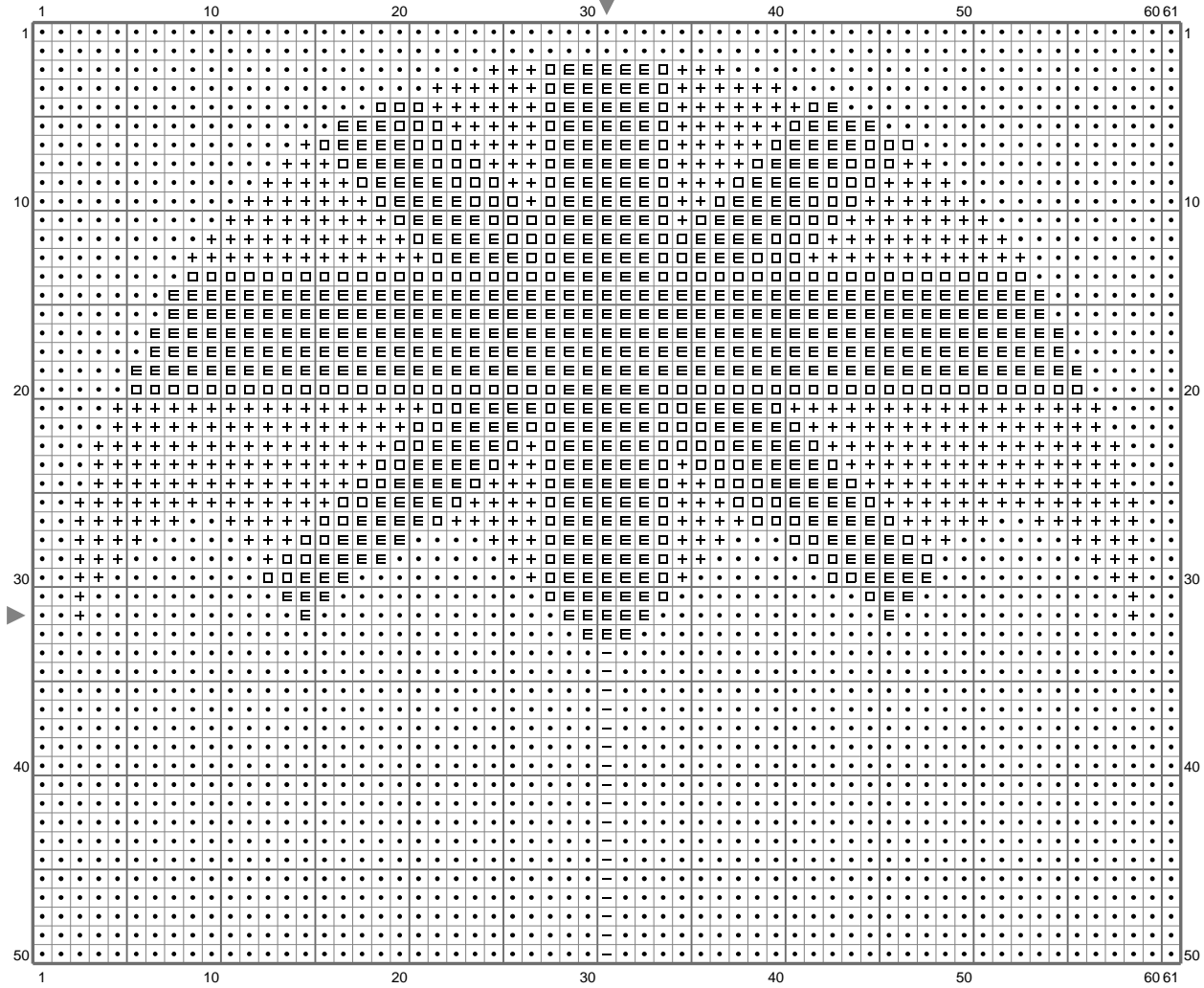
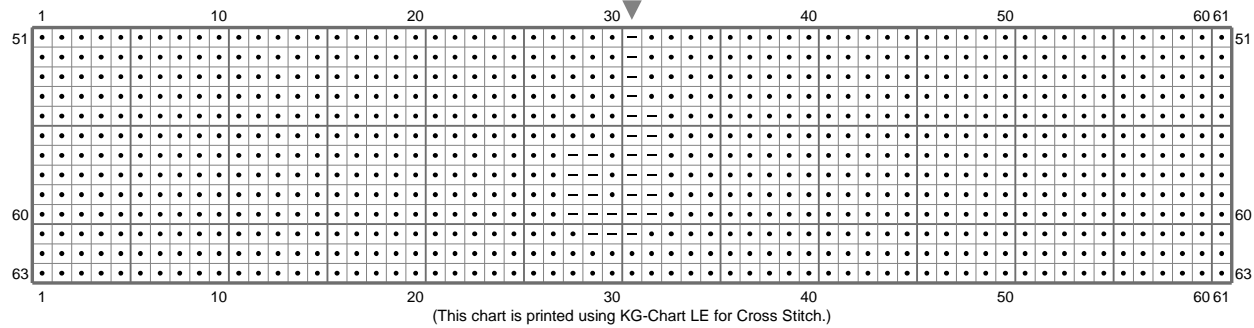


parapluie



(This chart is printed using KG-Chart LE for Cross Stitch.)

parapluie



Stitch Count: 61w x 63h

Finished Size: 7.94 cm x 8.20 cm (39 ct./inch)

Cloth: Linen

Cloth's Color: White

of colors: 5 Colors

Color Table (DMC)

Cross Stitch

- ECRU (2598 ct)
- BLANC (251 ct)
- ≡ 321 (520 ct)
- 782 (45 ct)
- ⊕ 820 (429 ct)