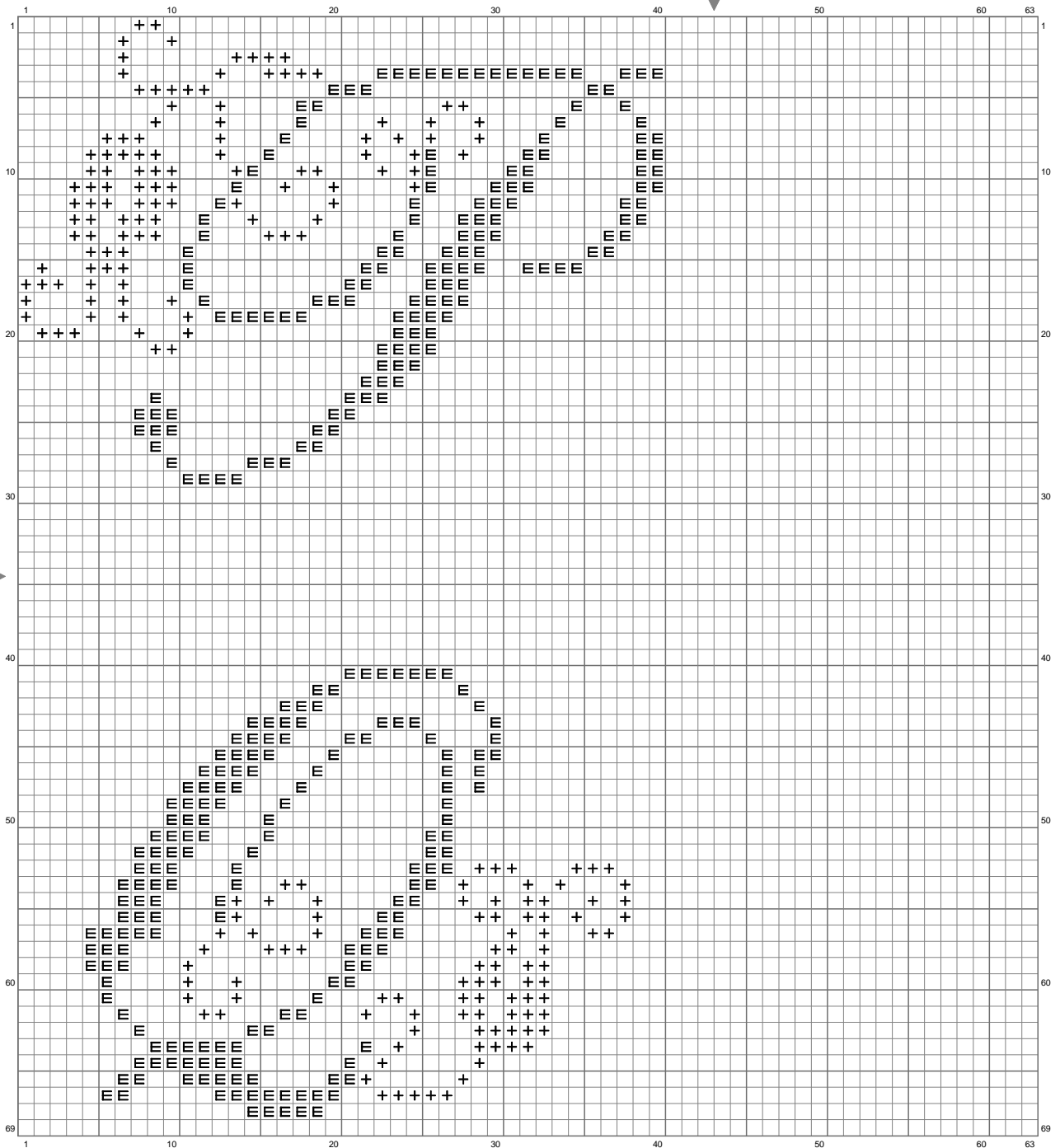
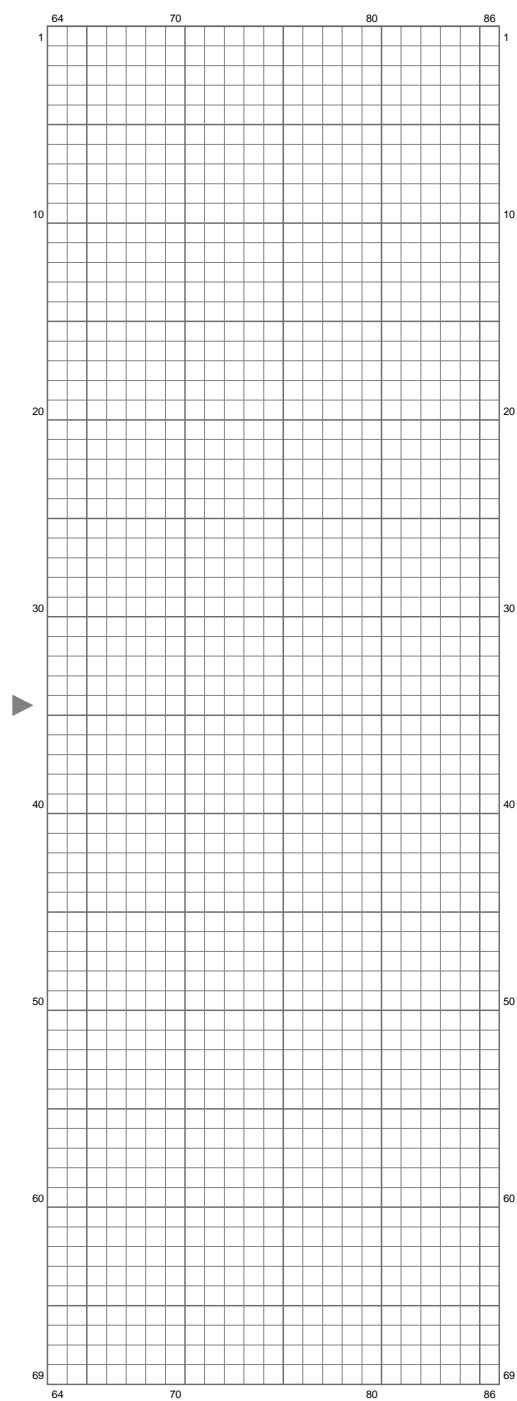


Lettre P et Q



(This chart is printed using KG-Chart LE for Cross Stitch.)

Lettre P et Q



(This chart is printed using KG-Chart LE for Cross Stitch.)

Lettre P et Q

Stitch Count: 86w x 69h

Finished Size: 12.84 cm x 10.30 cm (34 ct./inch)



Cloth: Linen

Cloth's Color: White

of colors: 2 Colors

Color Table (DMC)

Cross Stitch

| | |
|--|----------|
|  498 | (325 ct) |
|  3706 | (208 ct) |